

# G90 Firmware Update

## Instructions

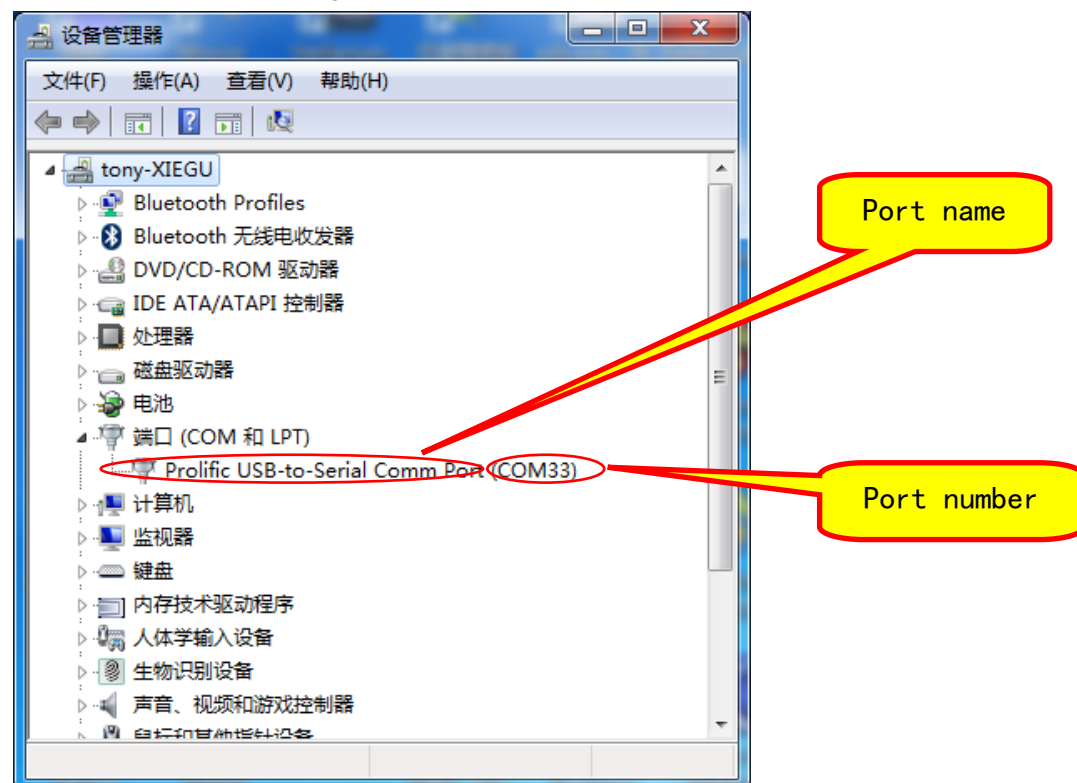
The following items are needed:

- A. USB-to-Serial cable
- B. G90
- C. A computer running windows(XP/Vista/7/8/10)operation system
- D. A 12~15VDC(current ability not less than 5A)power supply

### 1. Install USB-to-Serial cable:

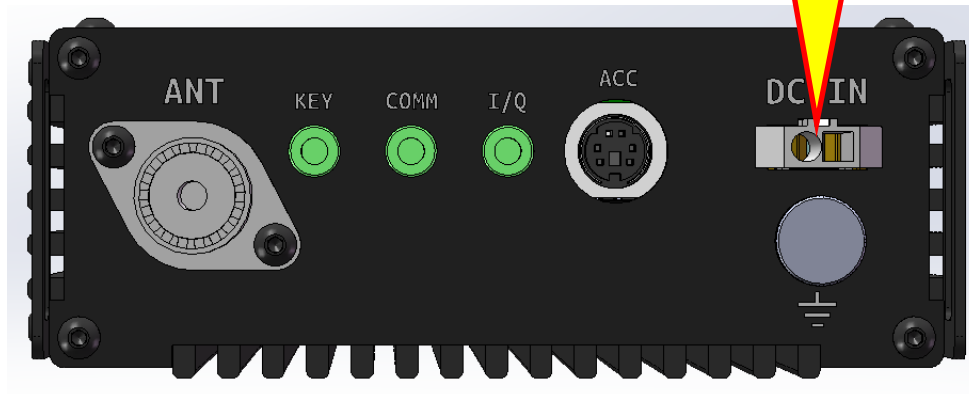
The very first thing is to make sure that the USB-to-Serial cable is working properly on the computer. After the cable is plugged into the USB port of the computer, the operating system will prompt to find the new hardware, and then the operating system will automatically install the driver of the new hardware. If all goes well, we can see the virtual serial port in the device manager of the computer. If the driver can't be automatically installed by the operation system then we need to install it manually (driver files can be found in the update pack).

After that, we can see the virtual serial port and its port number (which in my computer is COM33) in the device manager.

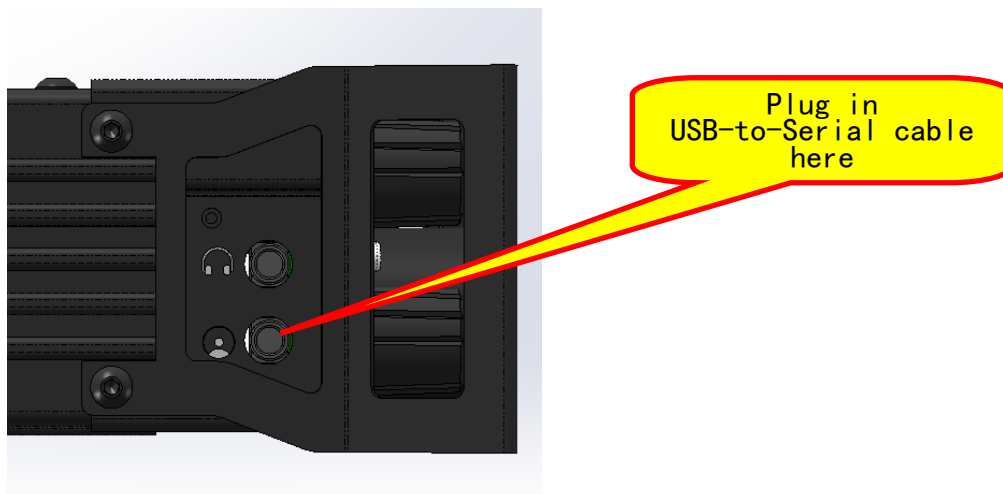


## 2. Wiring everything up:

### 2.1 Connect power cable



### 2.2 For Head updating:



### 2.3 For Base updating:

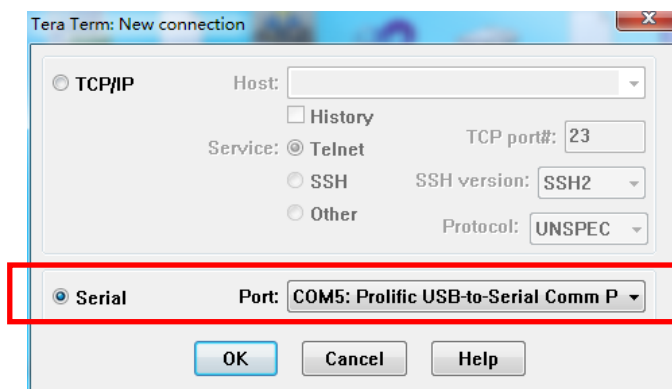
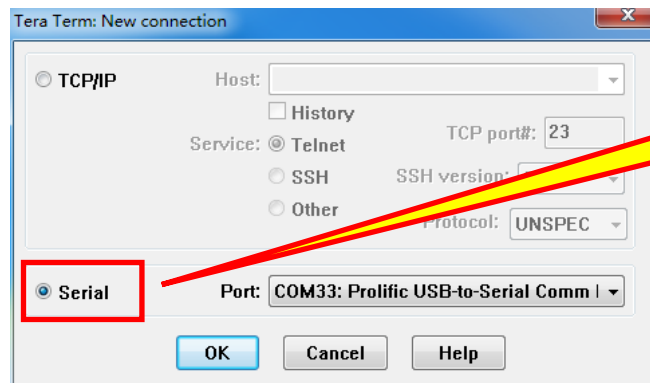


### 3. Update firmware via hyper terminal software:

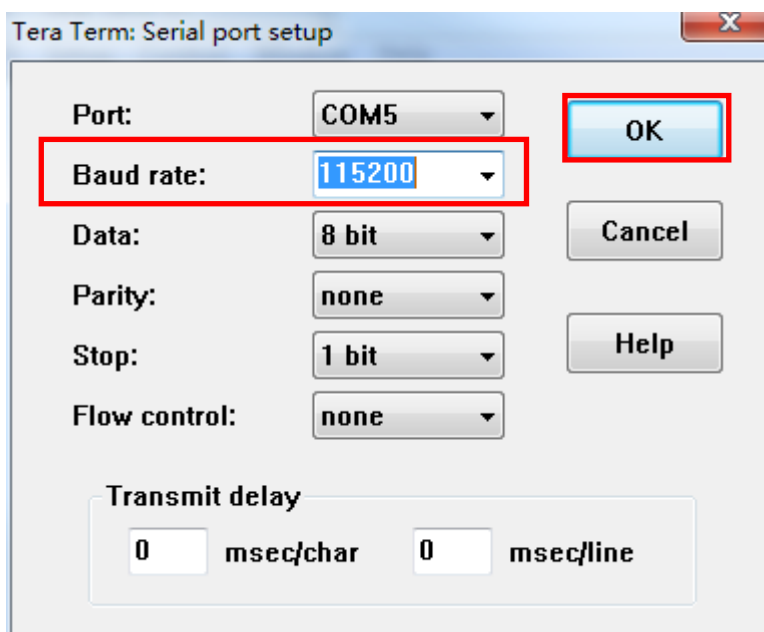
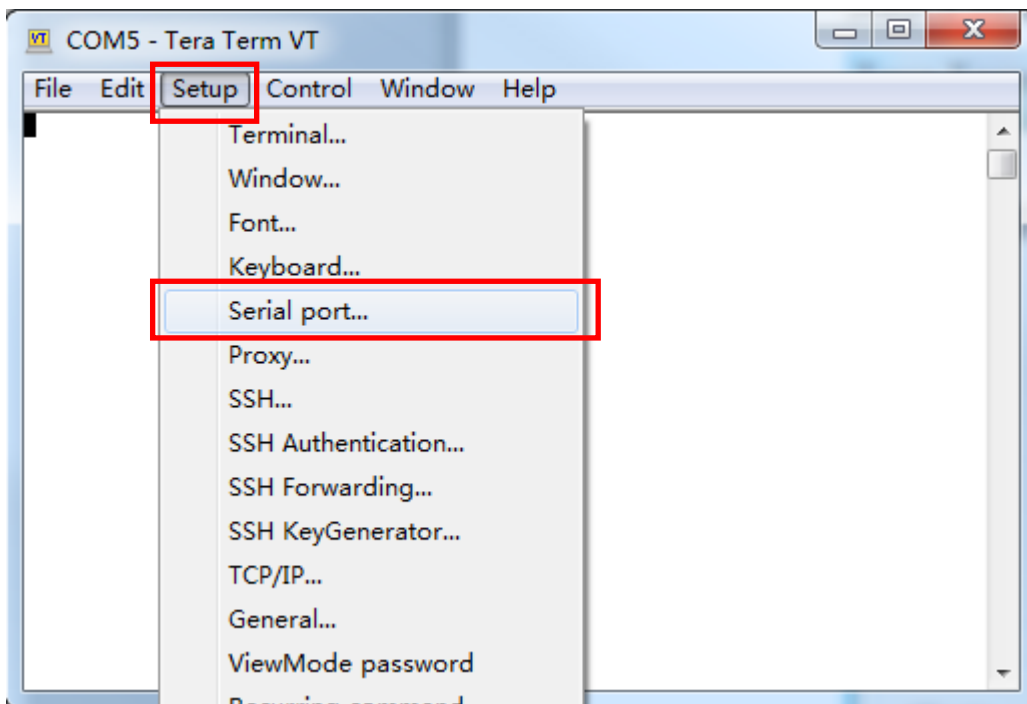
In order to transfer the firmware to the device, we use serial hyper terminal software which is named TeraTerm4.96.

#### 3.1 Configuration of TeraTerm4.96

a) Select the serial port:



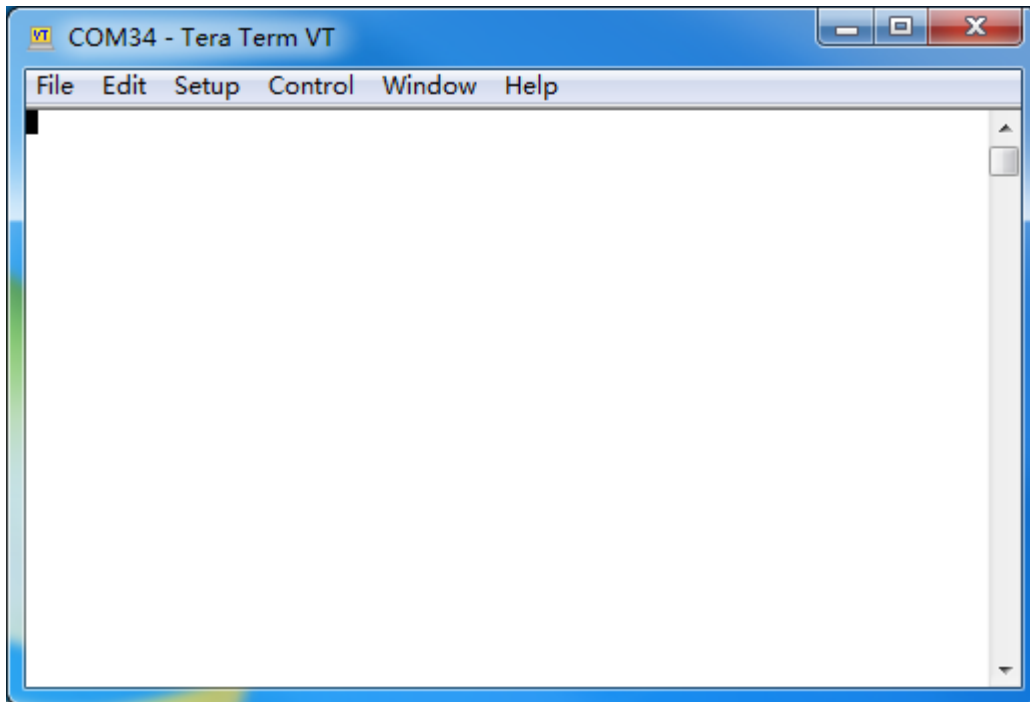
b) Select the baud rate:



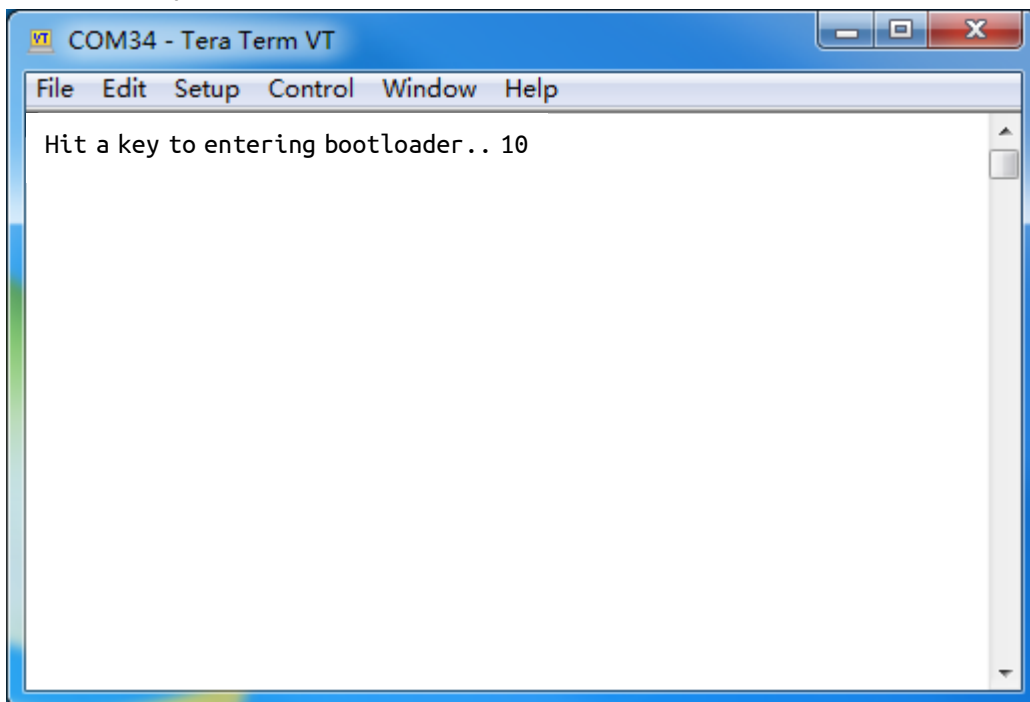
Click **Baud rate droplist** and select **115200**

Click OK

c) The main workspace:



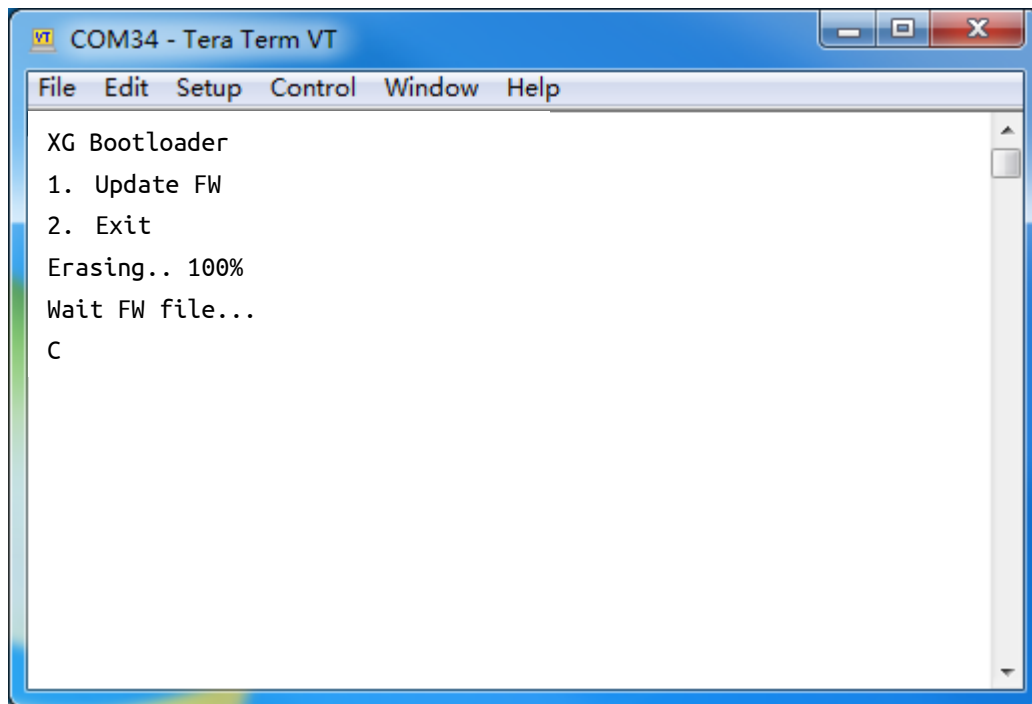
d) Press G90's power on button:



Press SPACE bar on the computer to interrupt the booting procedure.

Hint: There is a countdown timer at the end of string, press SPACE bar before time out.

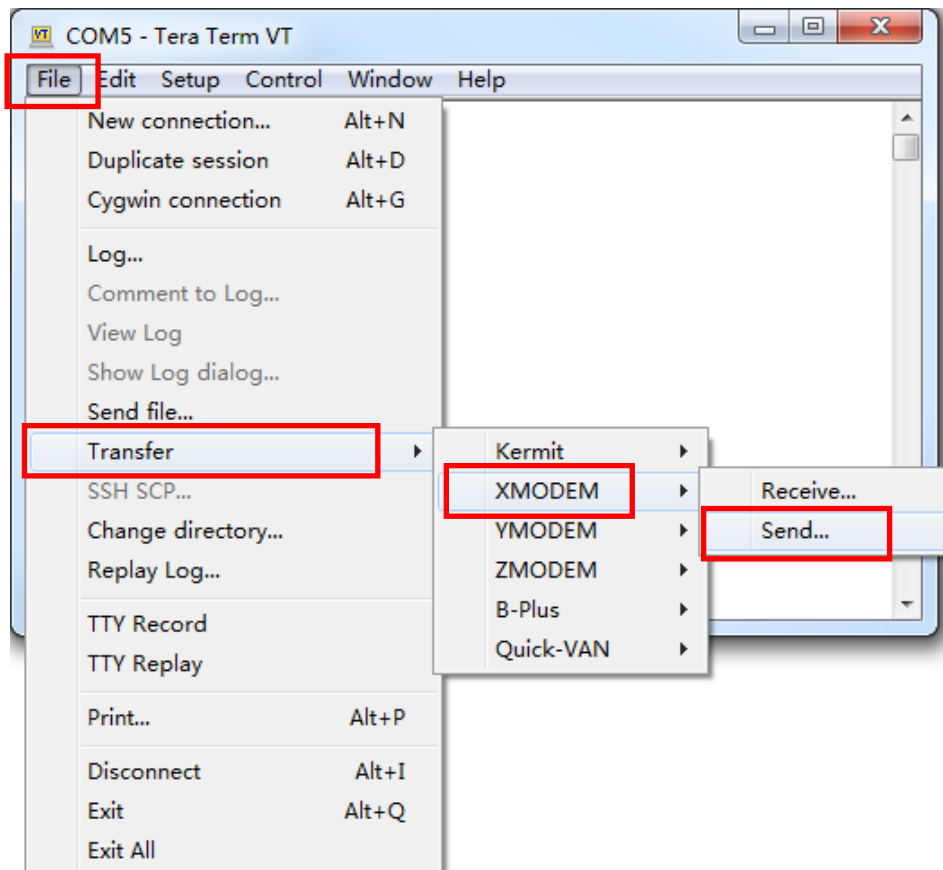
e) The updating menu:



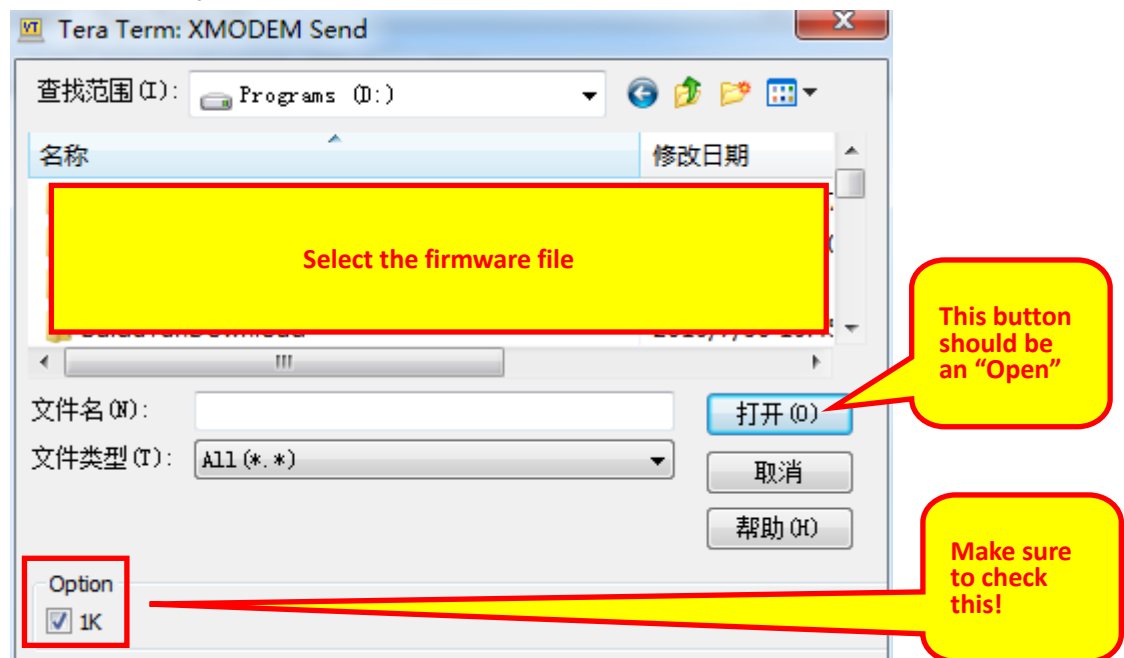
Step1: Press 1

Step2: Wait "Erasing.. 100%" and "Wait FW file..."

f) Select the firmware file:



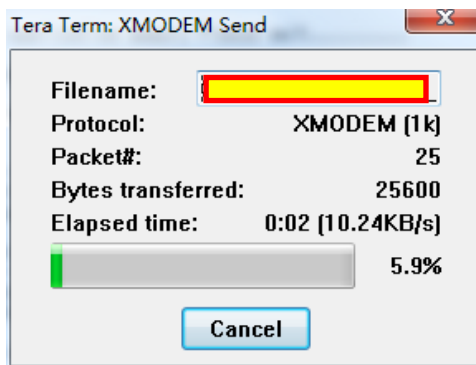
Click **File**→**Transfer**→**XMODEM**→**Send...**



Check **1K** checkbox.

Browse and select the firmware file, and click the "Open" button.

**g) Transfer start**



**h) Wait transfer finish and reset the G90**

--End-of-instruction--