

Expand to be with HF and CB Bands

(HF + CB)

What you need?

- 1 x Radioddity QT60 radio
- 1 x Phillips-head screwdriver
- 1 x Scissors
- 1 x Tweezer (optional)



Expansion Guide

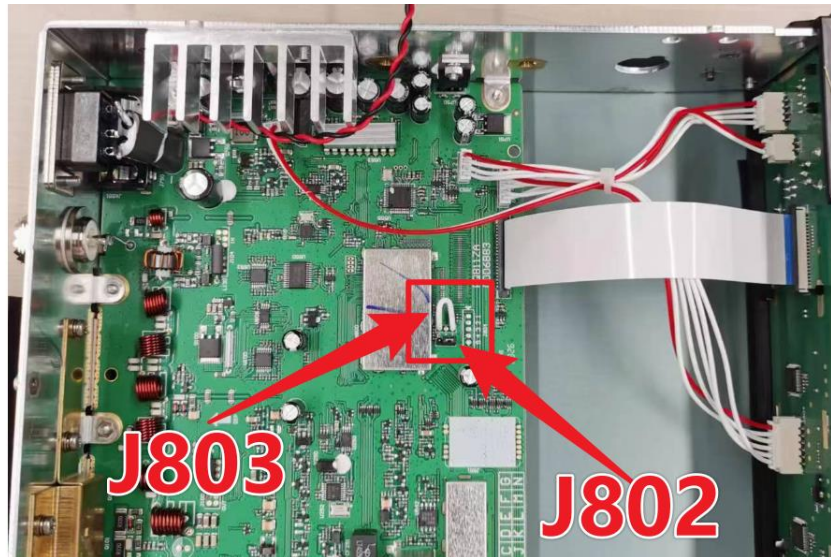
Step 1. Power off the radio, remove the following 4 screws.



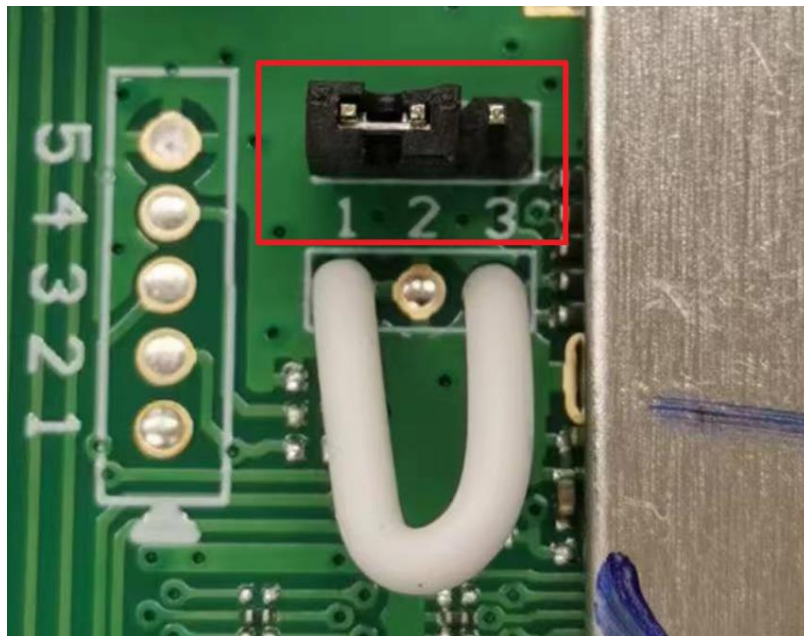
Step 2. Remove the top case and be aware of the wired connections on the motherboard.



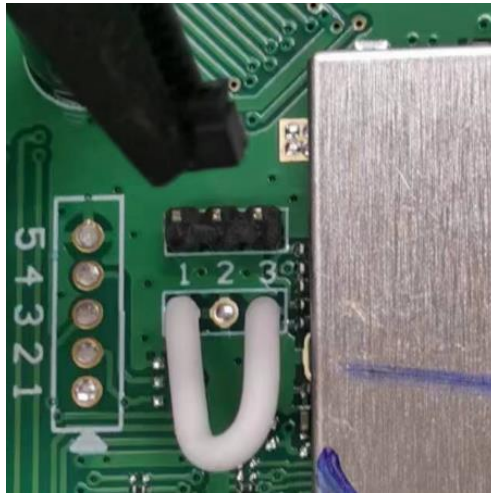
Step 3. Observe the motherboard and locate the J802 electronic component, and the J803 wire.



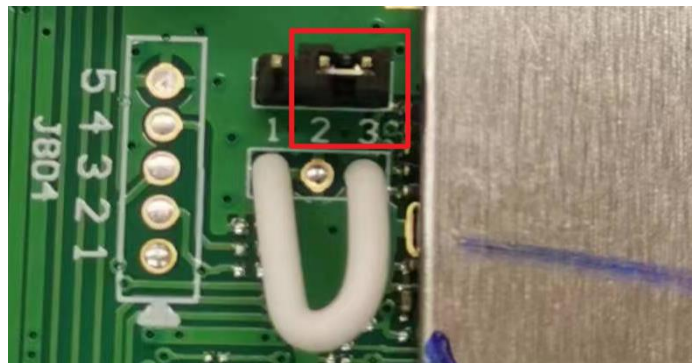
The J802 is covered by a 2-pin connector, bridging 1 and 2 as below.



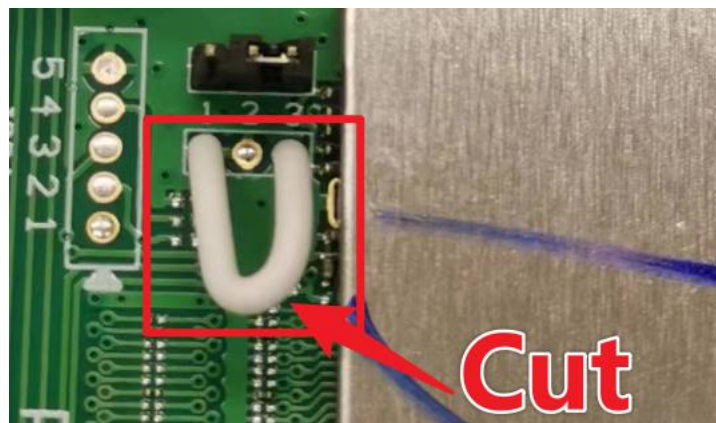
Step 4. Remove it from the base with your finger or a tweezer.



Take a breath. Put it back to the base, bridging 2 and 3.



Step 5. Cut the J803 wire with a pair of scissors.



Congratulations! Now install back the radio shell and put the 4 screws back.

Enjoy your radio with expansion mode.

(Please note that the expansion cannot be restored unless you switch back the J802 unit and solder back the J803 wire)