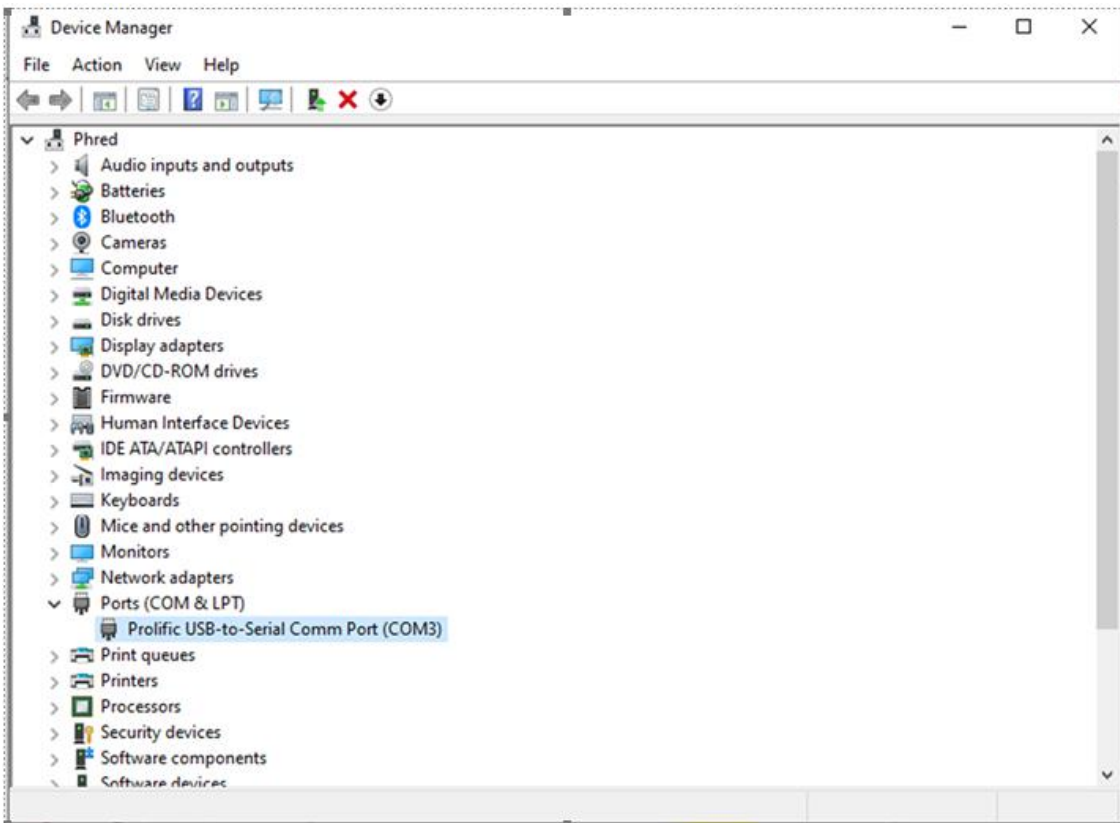
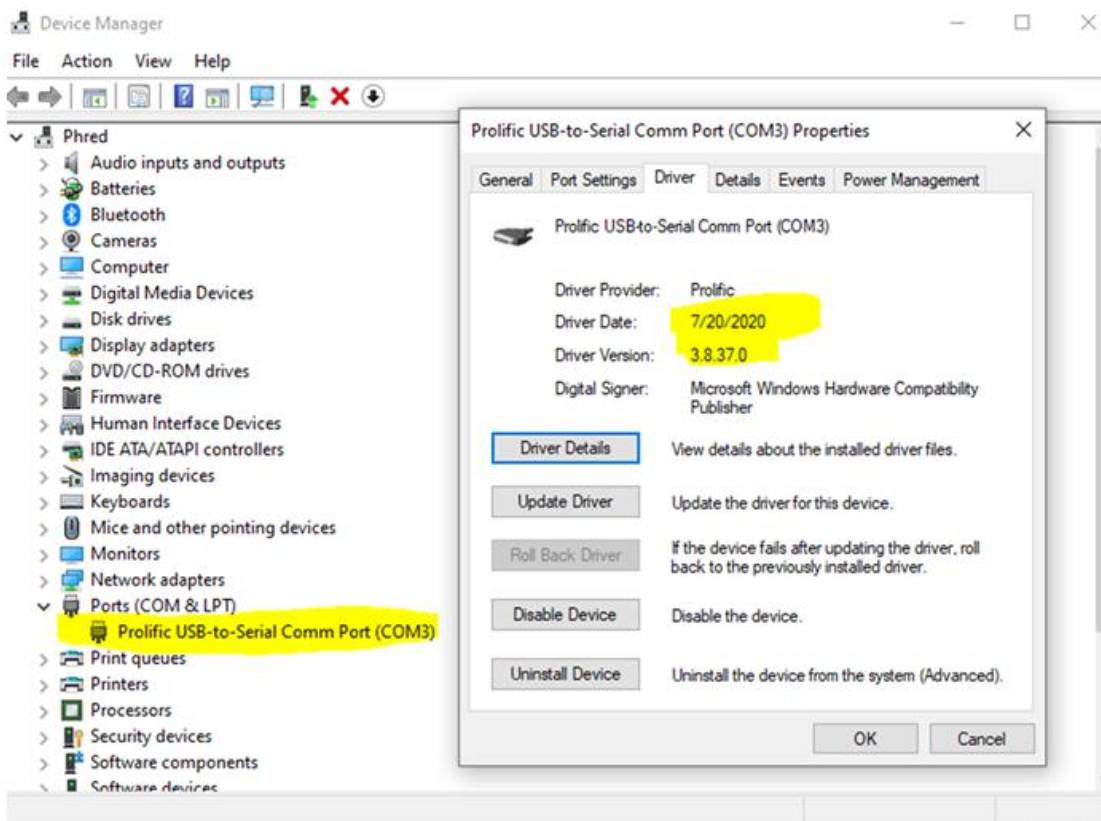


If Bluetooth is enabled on the radio, the radio will not communicate with the PC using the cable.

Plug Programming Cable into the computer
Open Device Manager

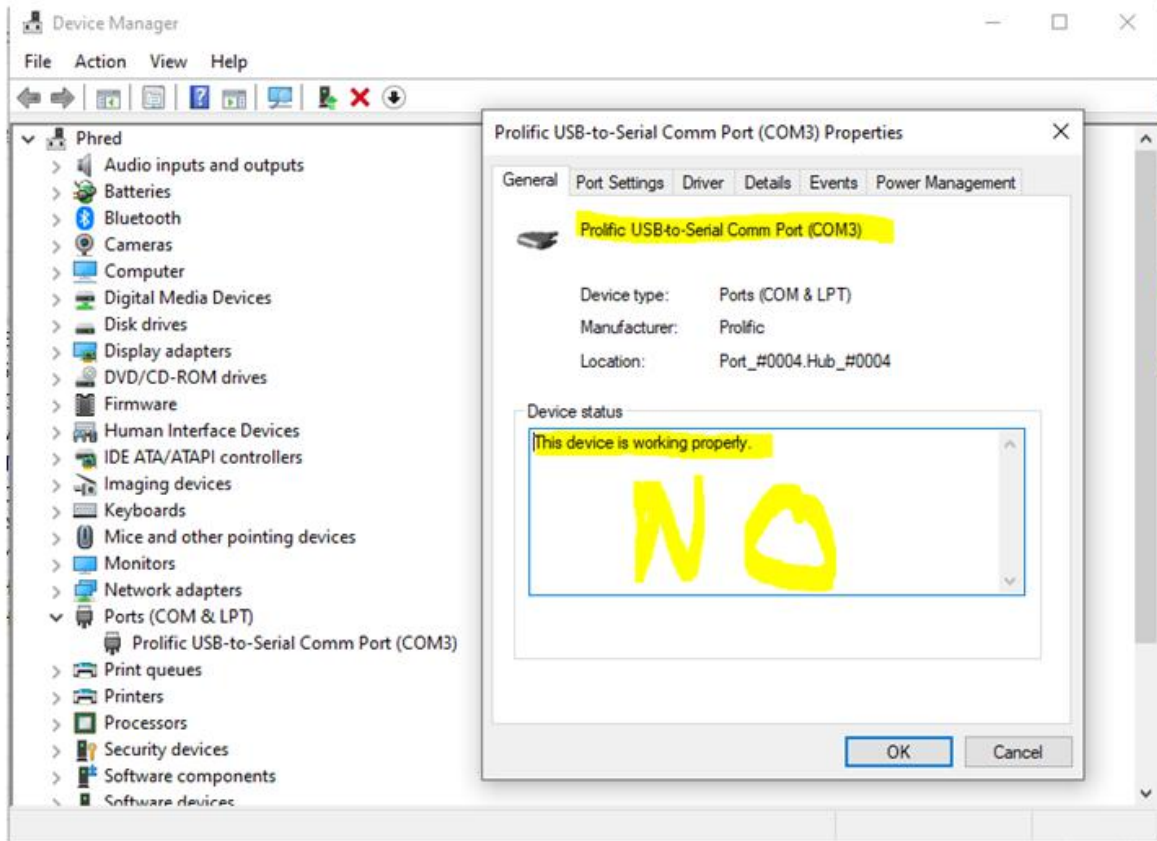


If the cable is identified as a Prolific USB-to-Serial Comm Port., Windows will load this driver:

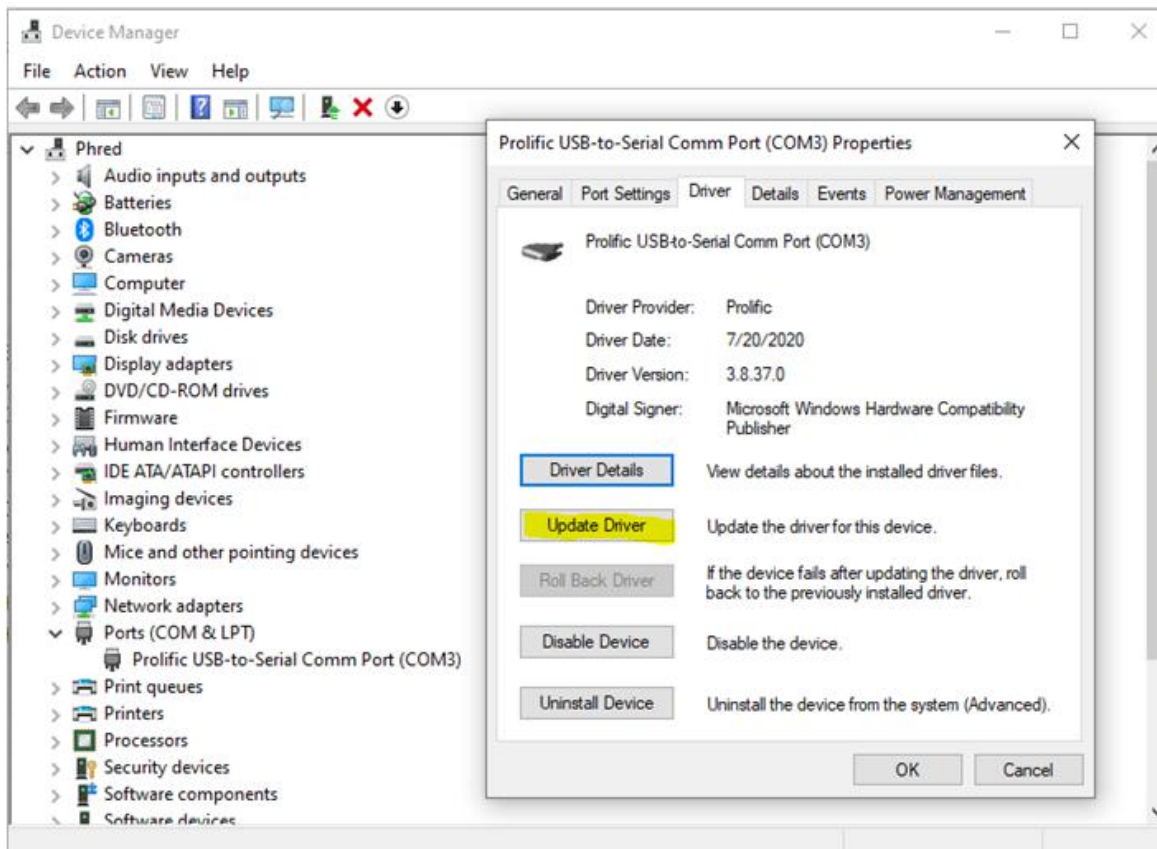


Open the General Tab

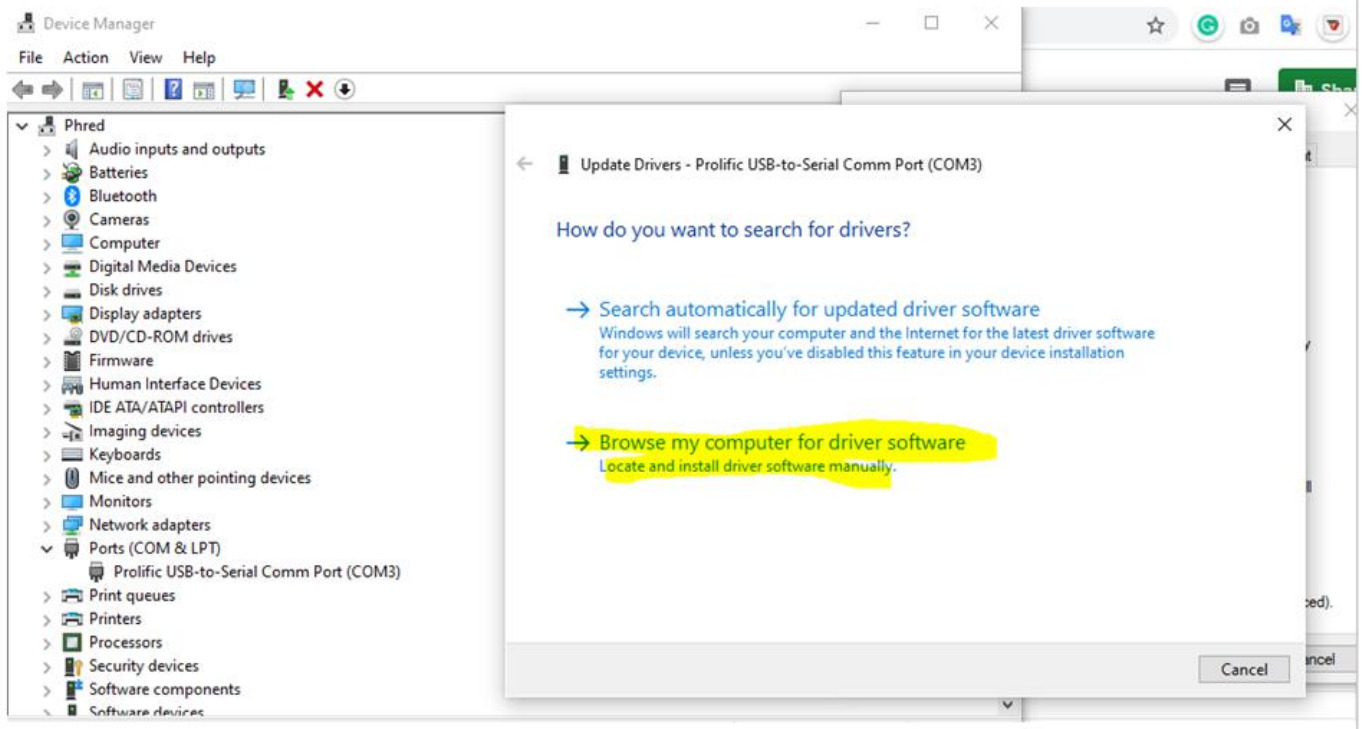
Windows will inform you it is working correctly,



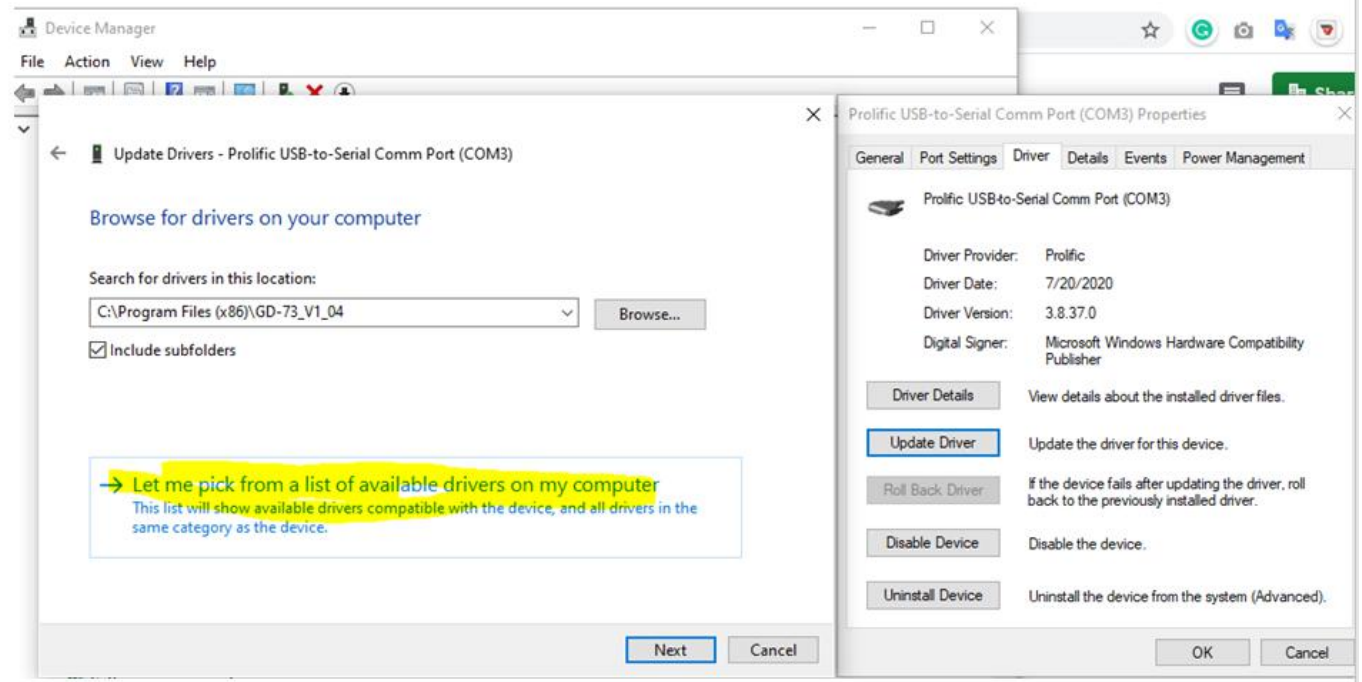
Open the Driver Tab in Device Manager and select Update Driver



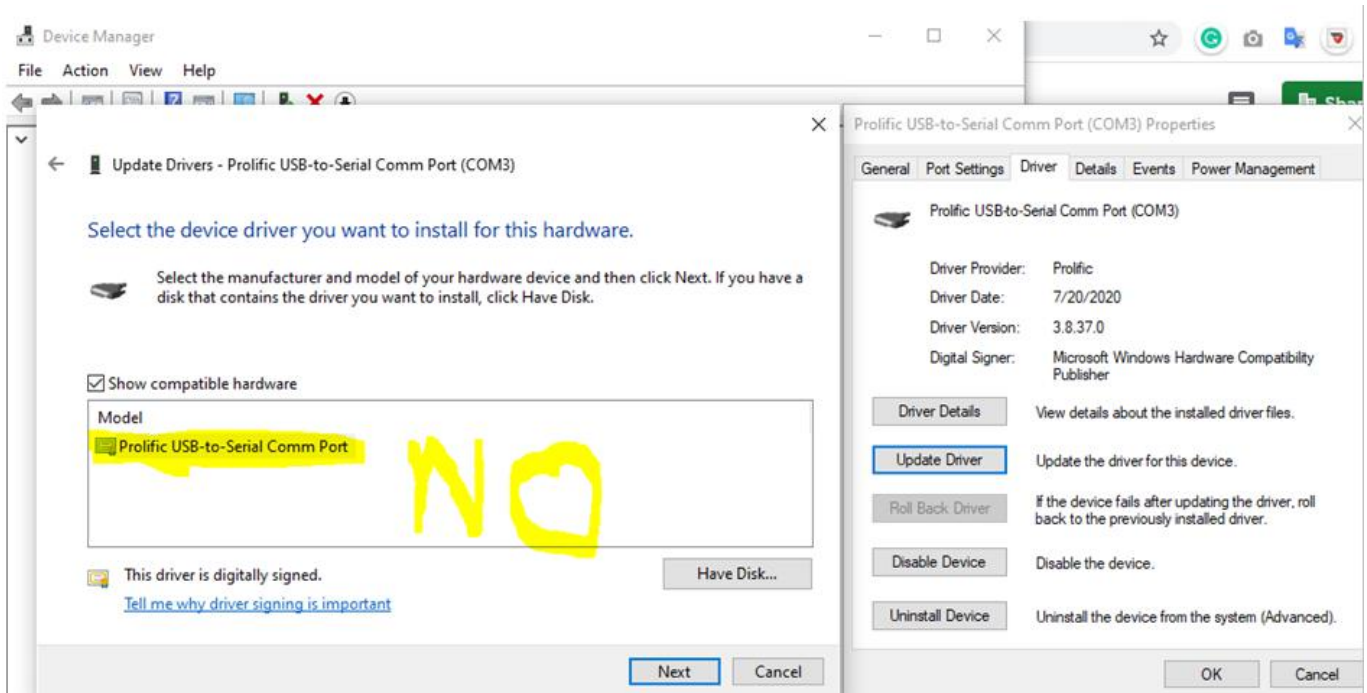
Select Browse my computer for driver software



Select Let me pick from a list of available drivers on my computer



If you see the following, or any other driver than **Version 3.2.0.0 sated 7/31/2007**, you will need to download and install the correct driver

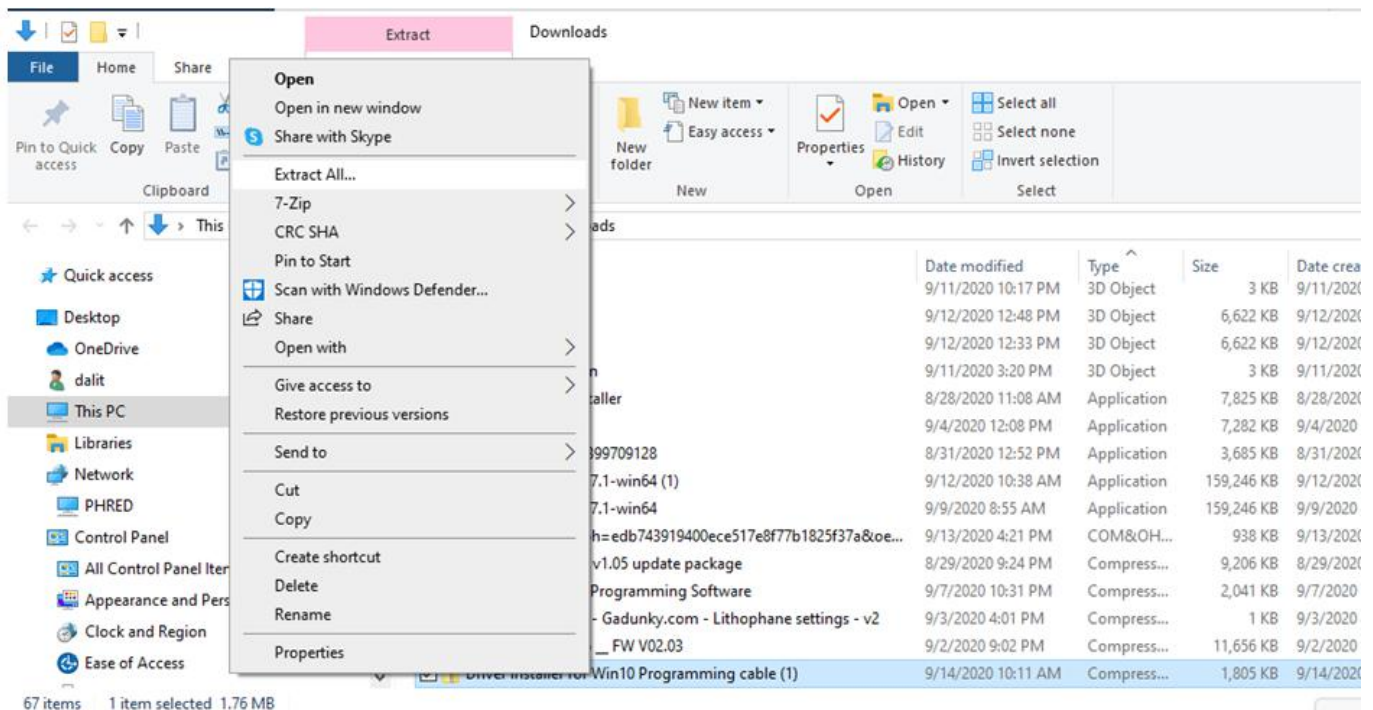


<http://s3.amazonaws.com/s3.image.ro/download/Driver%20installer%20for%20Win10%20Programming%20cable.zip>

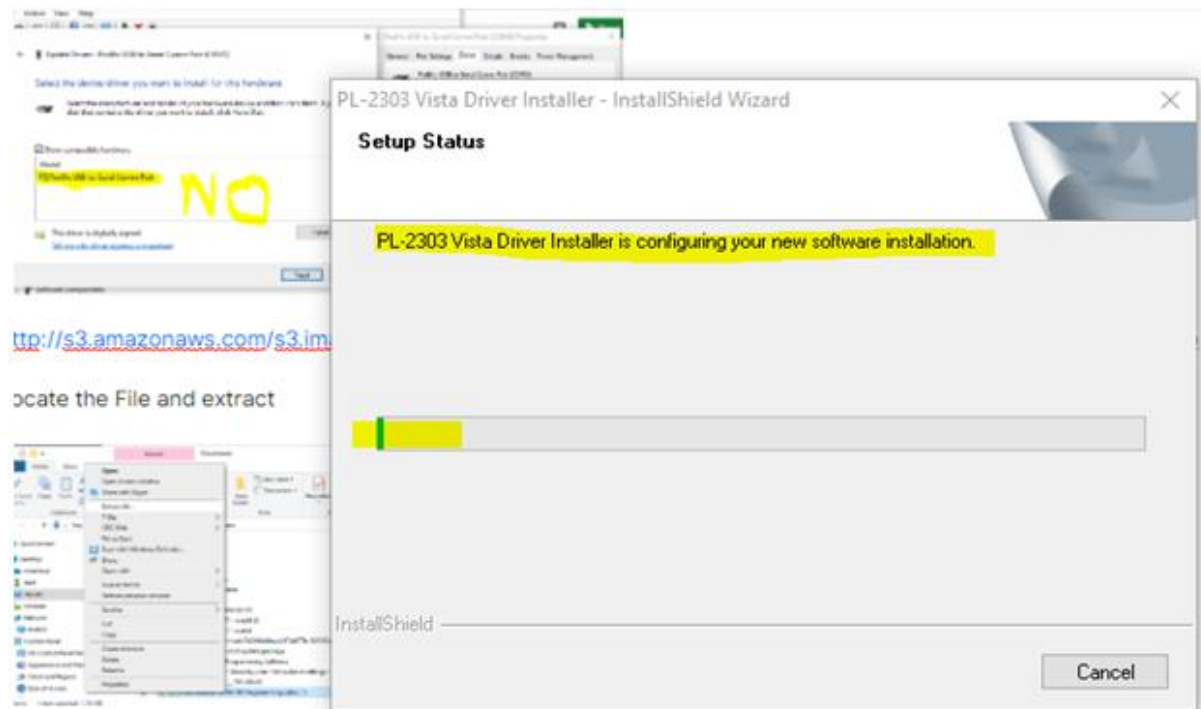
Locate the File

Name	Date modified	Type	Size	Date created
Driver installer for Win10 Programming cable (2)	9/17/2020 10:50 AM	Compress...	1,805 KB	9/17/2020 10:50 AM

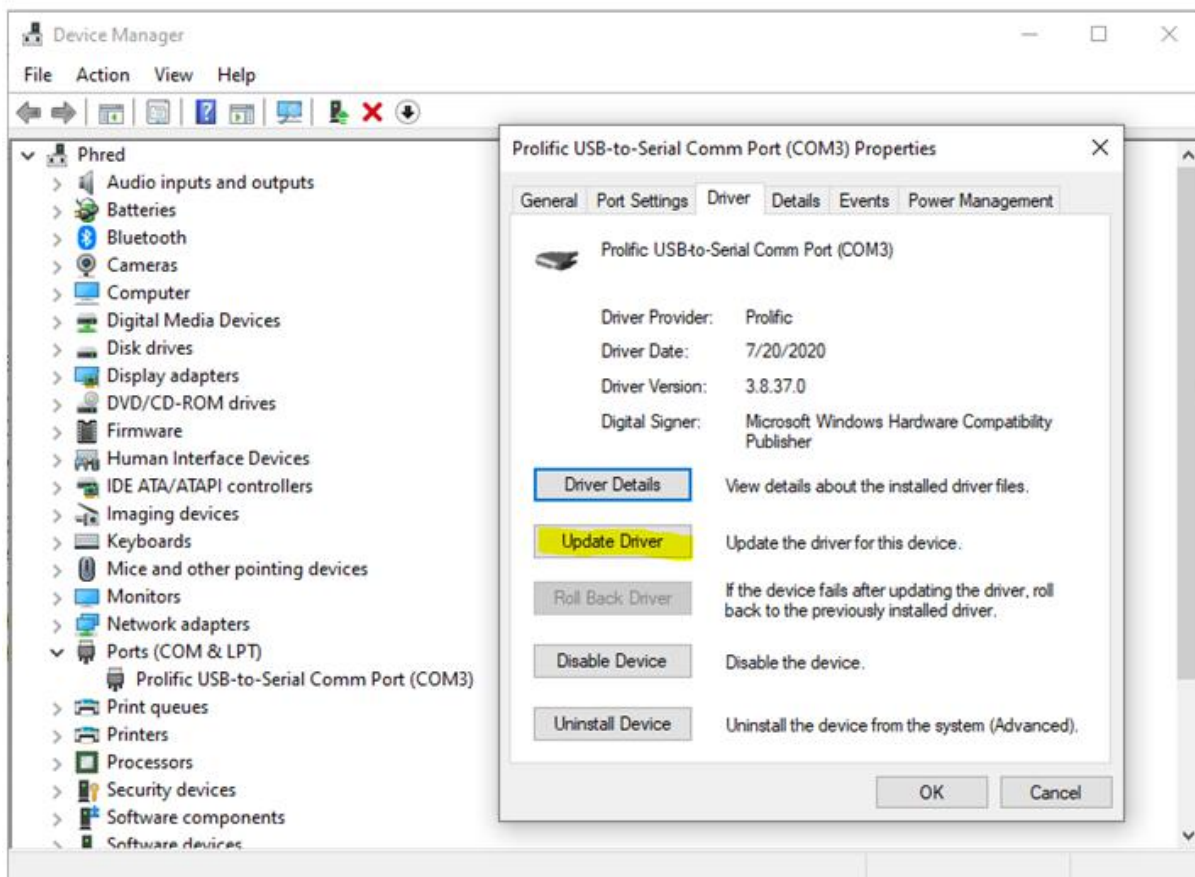
and extract



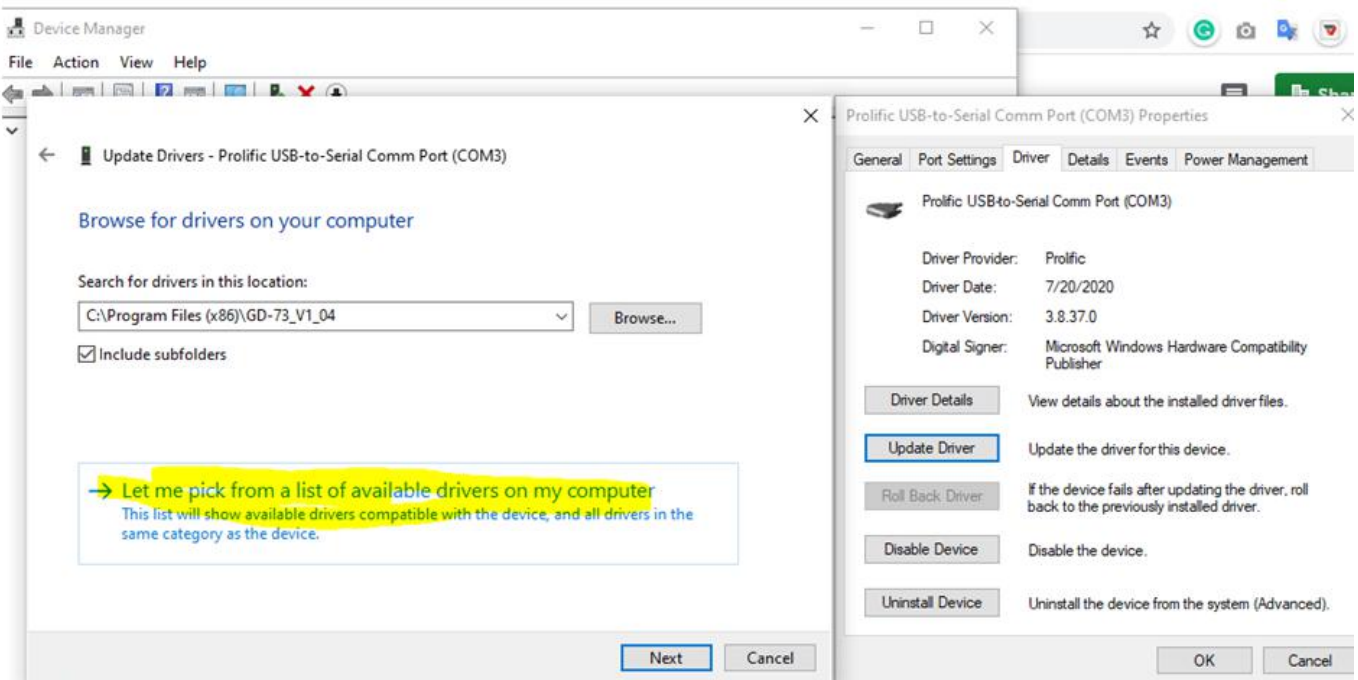
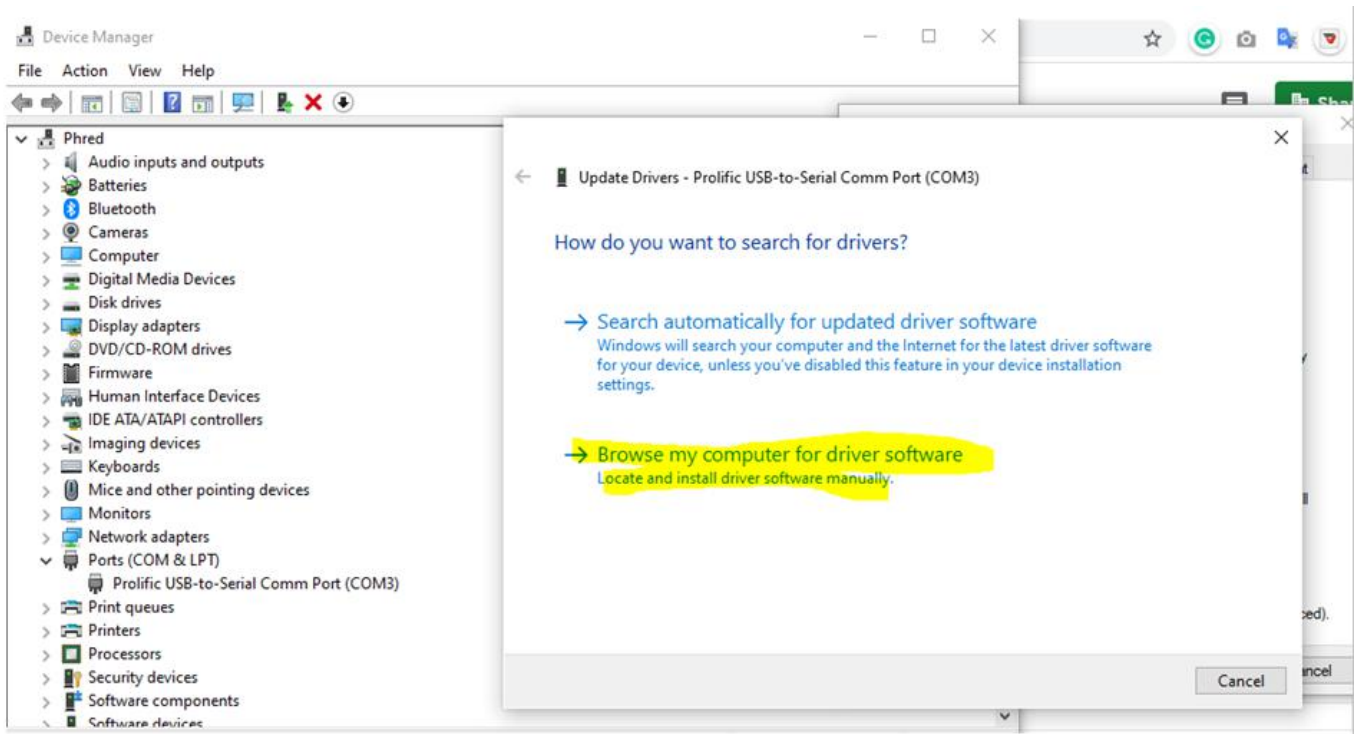
Highlight the installation app, **Right-Click and Run as Administrator**
Accept Changes



When Installed, Go Back to Device Manager, open the properties and select the Driver Tab, then select update Driver

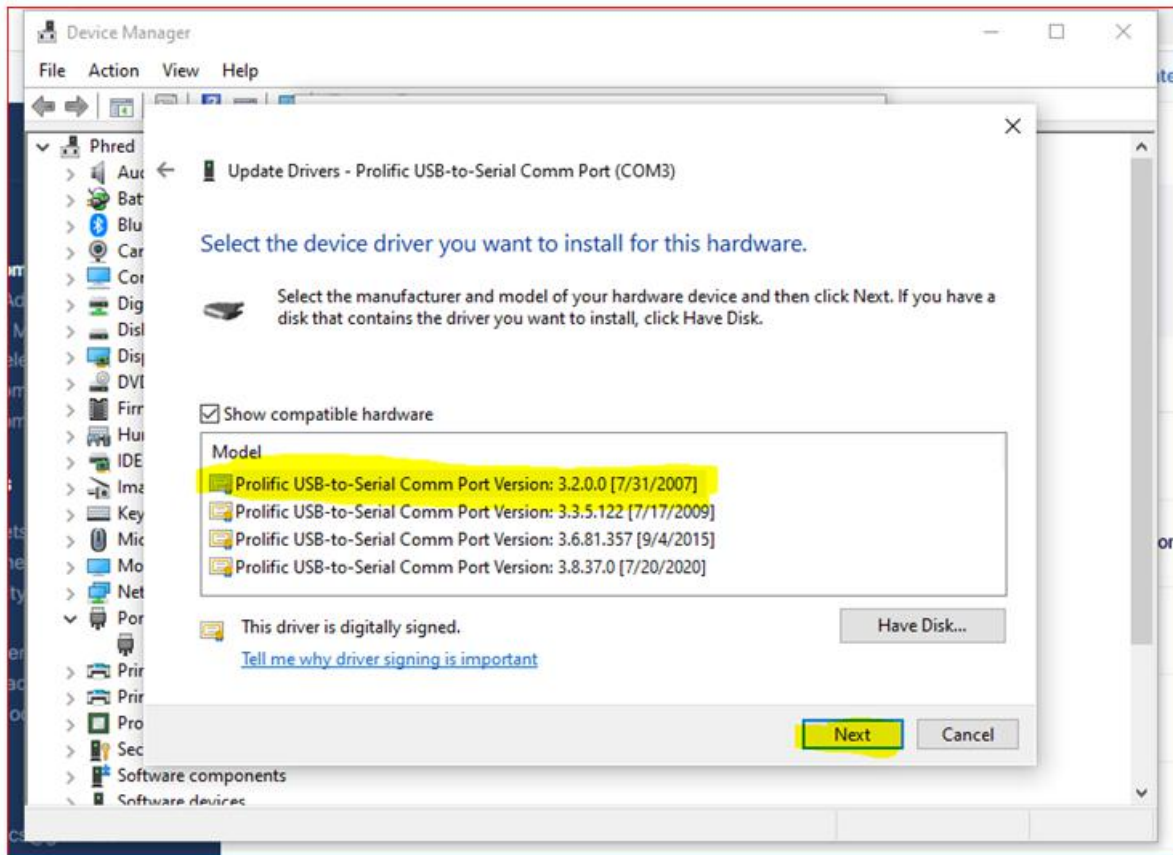


Complete the process again

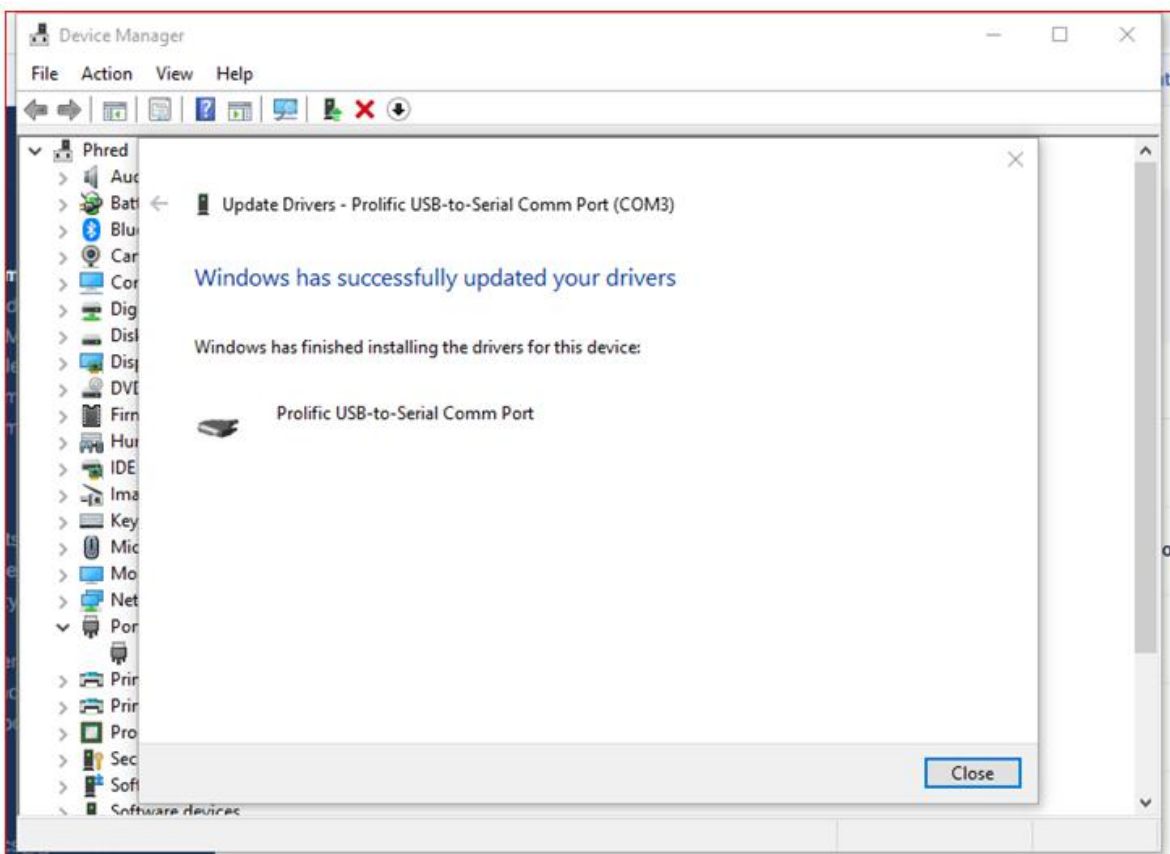


Highlight Prolific USB-to-Serial Comm Port Version: 3.2.0.0 [7/31/2007]

Click Next

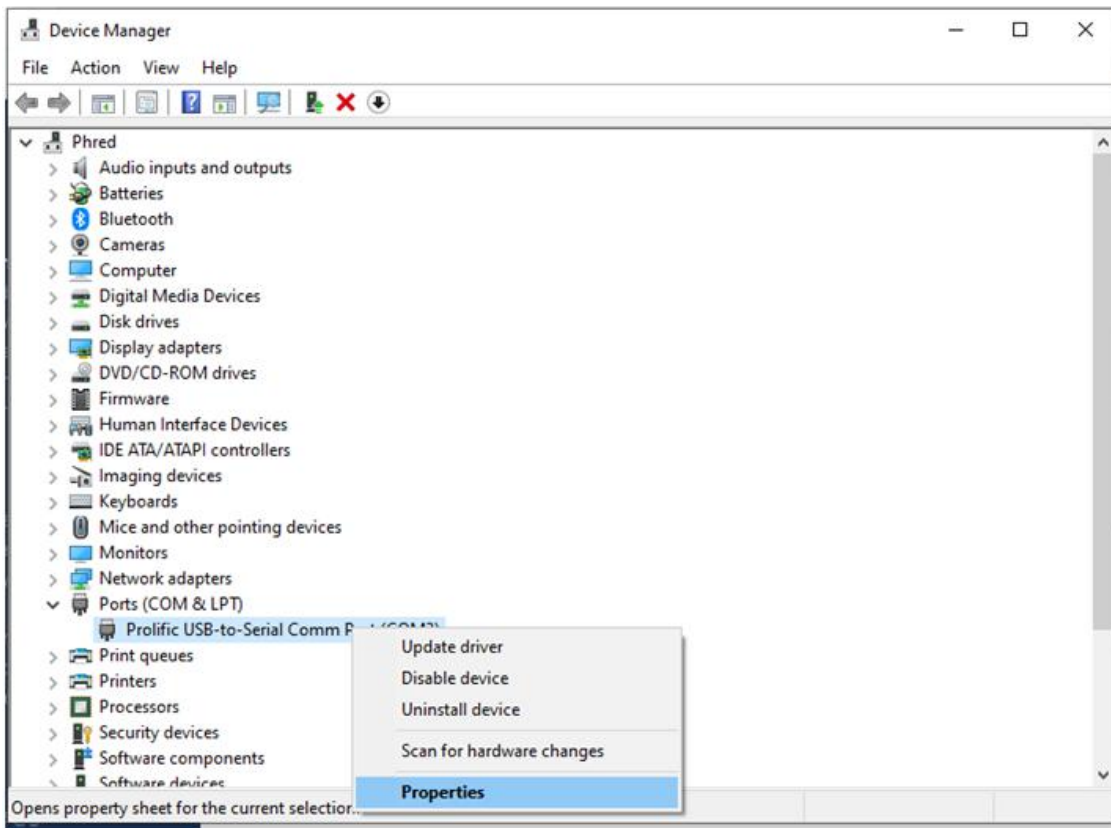


The selected driver is loaded

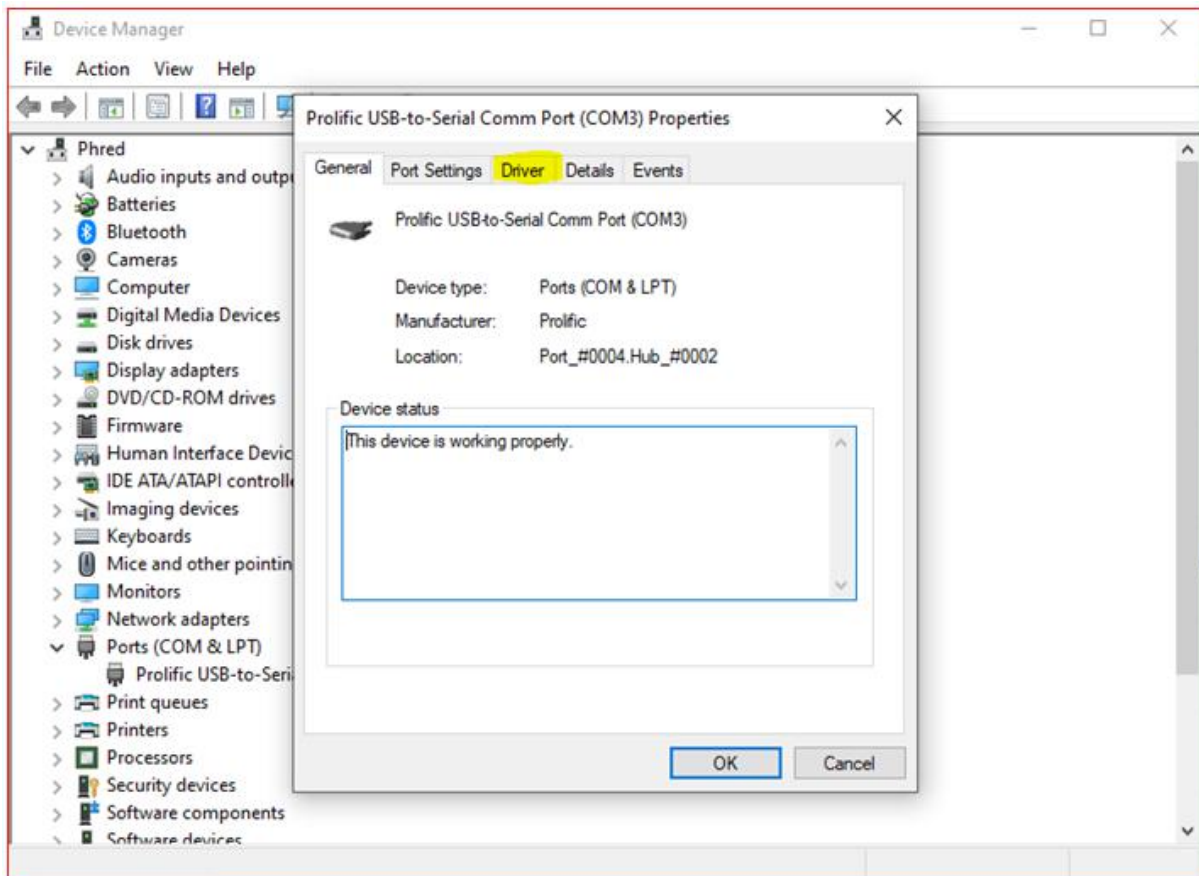


Go back to Device Manager, Right-Click on the Prolific USB-to-Serial Comm Port (COMx)
[x is the number you see assigned to the Comm Port on your computer.]

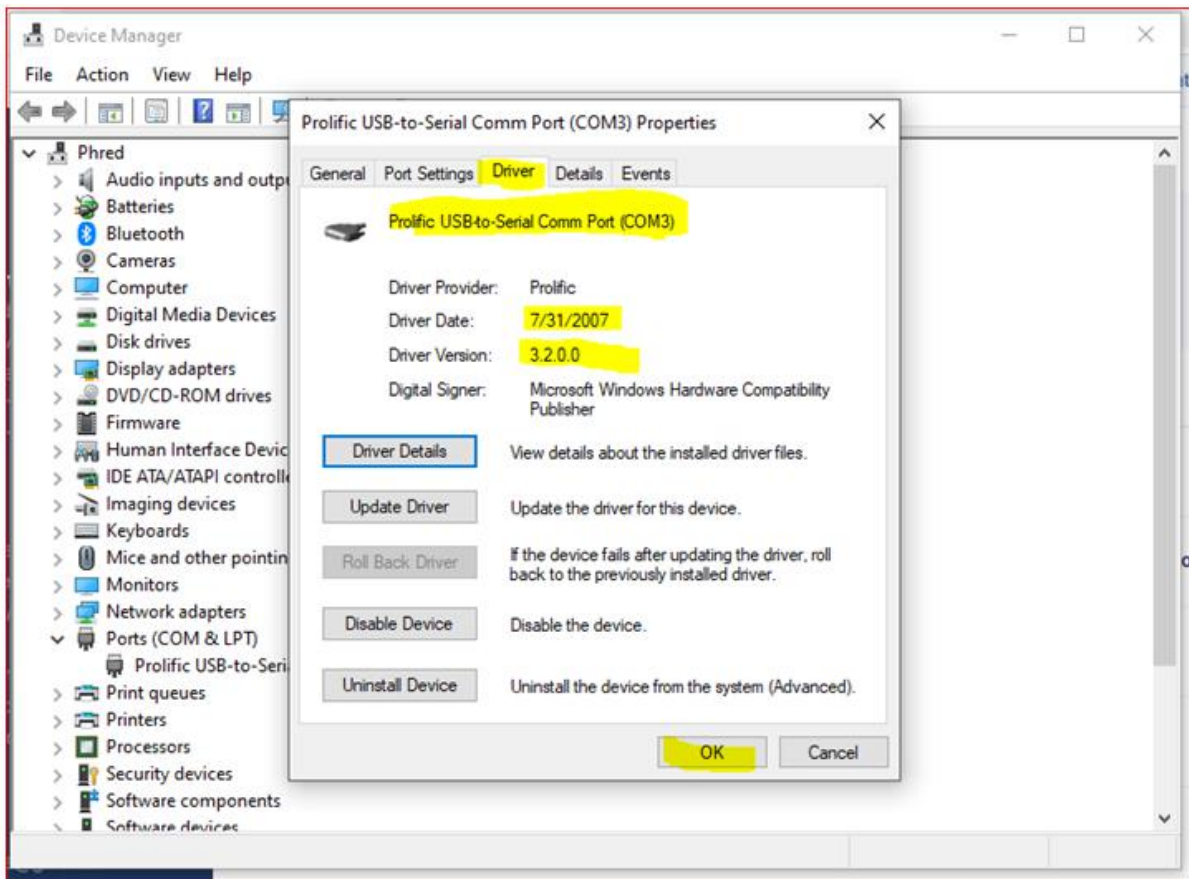
Select Properties



Select Driver



Correct Version is Verified



Click OK

Load Software and Read the Radio

If FTDI Drivers used with the Xiegu USB Data cable is no longer being recognized by Windows, down below is the manufacturer's site, info, and download link for the setup program to install a working driver.

- Manufacturer's web site info:

<https://www.ftdichip.com/Drivers/D2XX.htm>

Currently Supported D2XX Drivers:

Operating System	Release Date	Processor Architecture					Comments
		x86 (32-bit)	x64 (64-bit)	ARM	MIPS	SH4	
Windows*	2017-09-30	2.12.28	2.12.28	-	-	-	WHQL Certified Includes VCP and D2XX. Available as a setup executable Please read the Release Notes and Installation Guides.

- Direct download link:

https://www.ftdichip.com/Drivers/CDM/CDM21228_Setup.zip