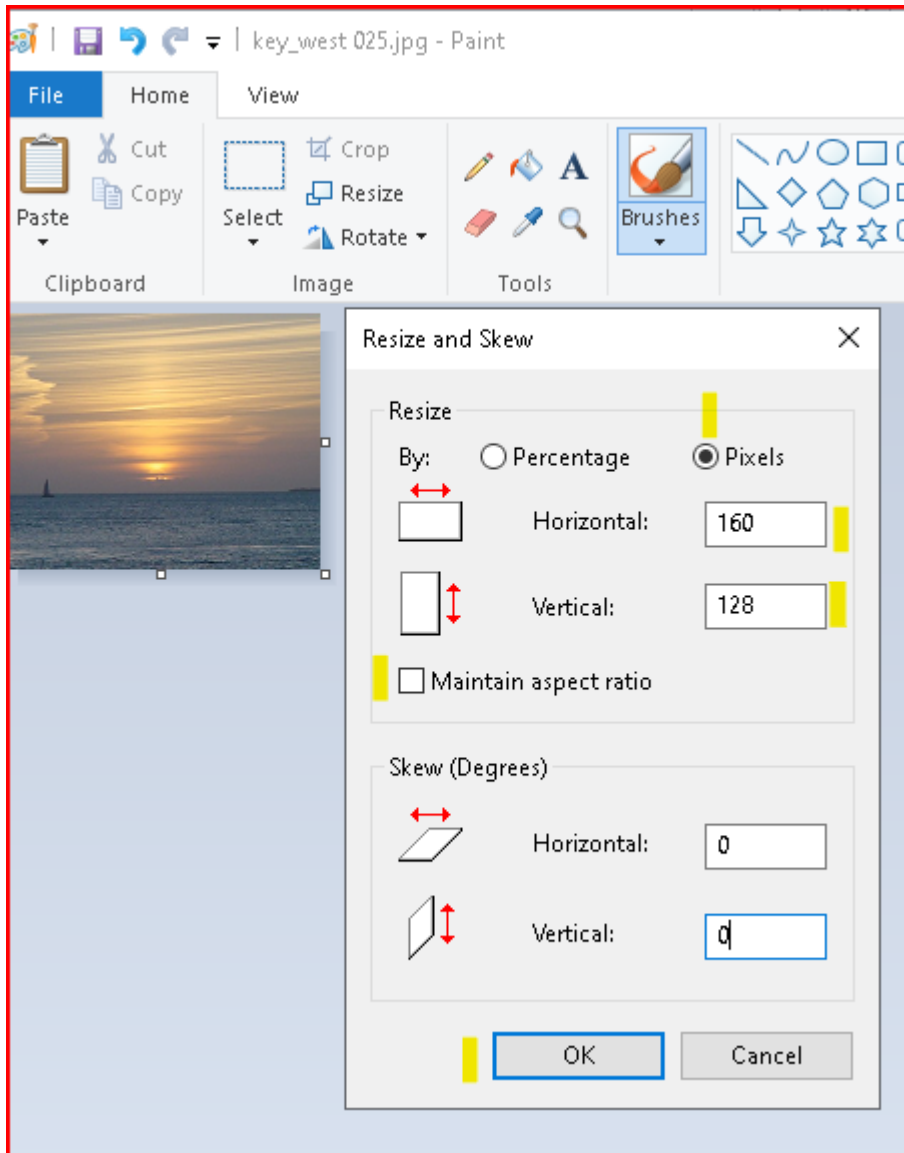


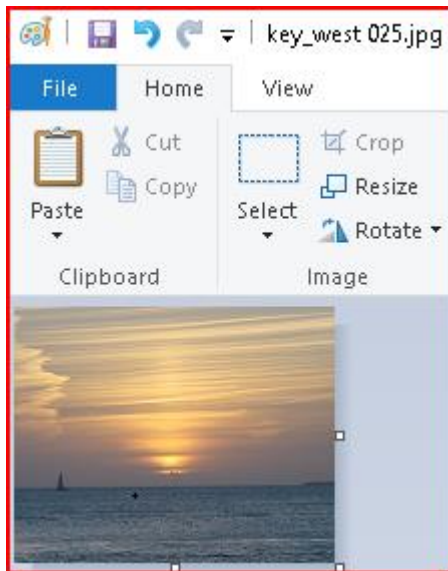
The GC-5 has the ability to load a Power-On Picture

Preparation

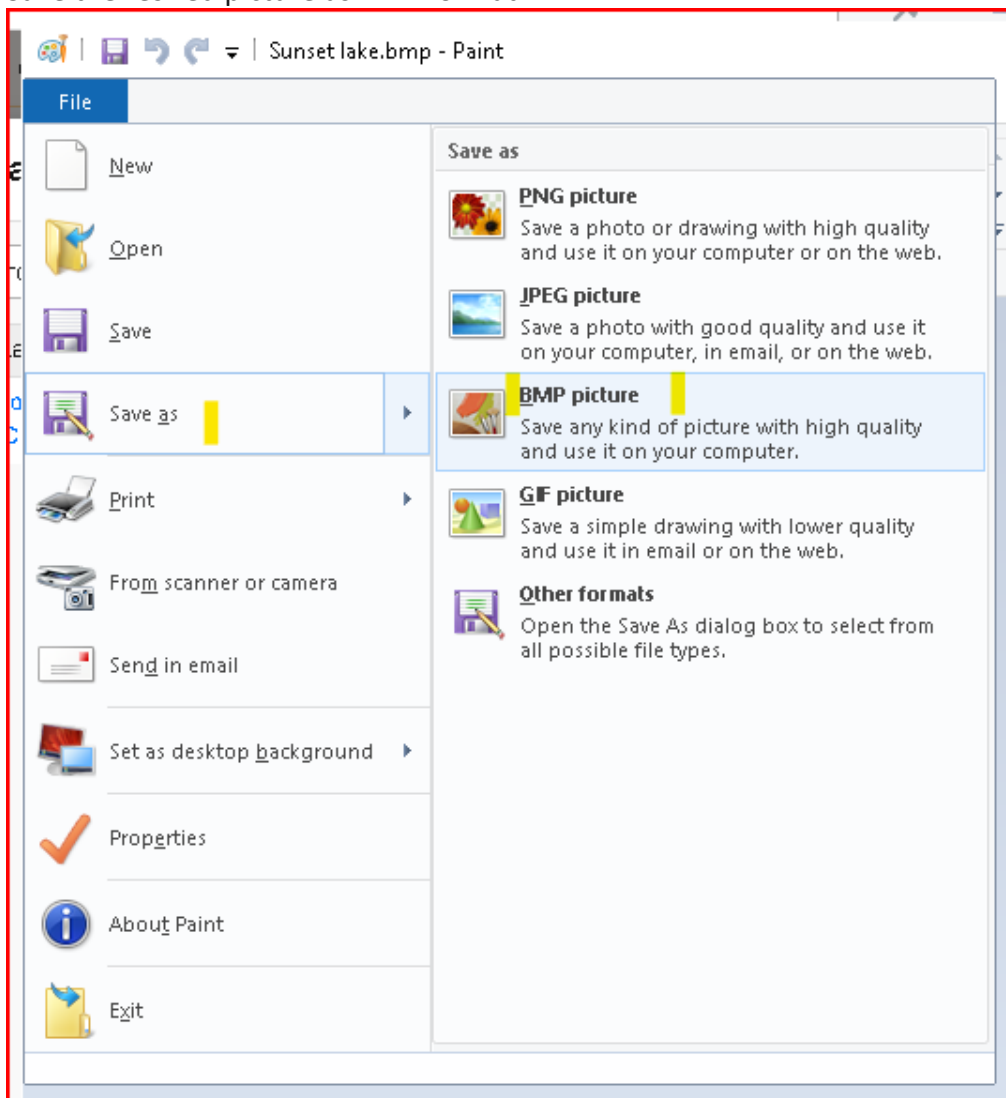
1. Open Paint, or your favorite Pic editor
2. Load Picture
3. Select Resize
4. Uncheck Maintain aspect ratio
5. Select Pixels - 160 Horizontal and 128 Vertical



6. Click OK



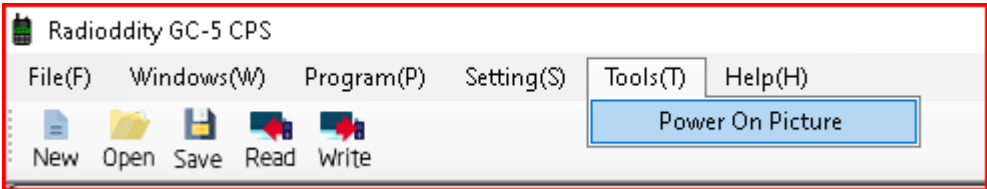
7. Save the resized picture as BMP format.



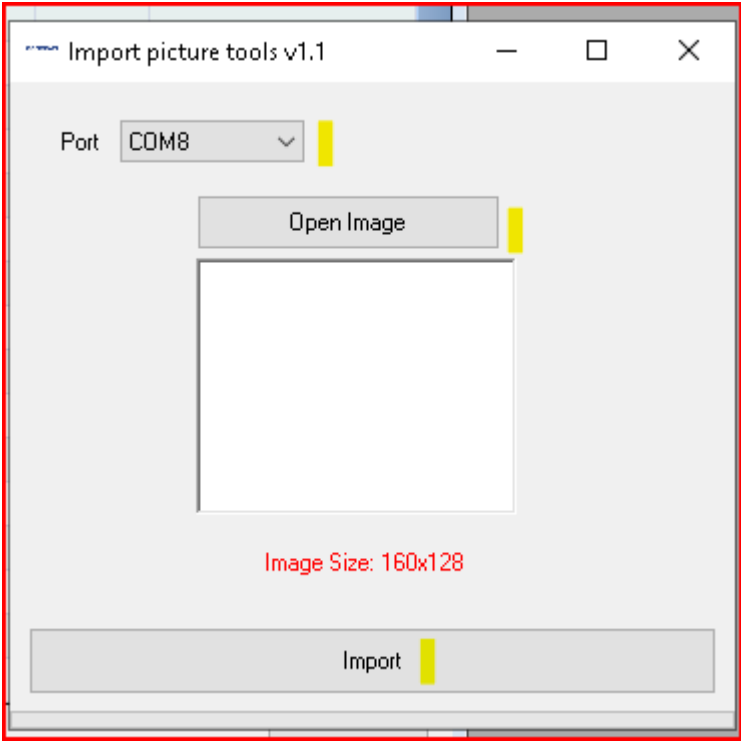
=====

Customize Your Powe-On Picture

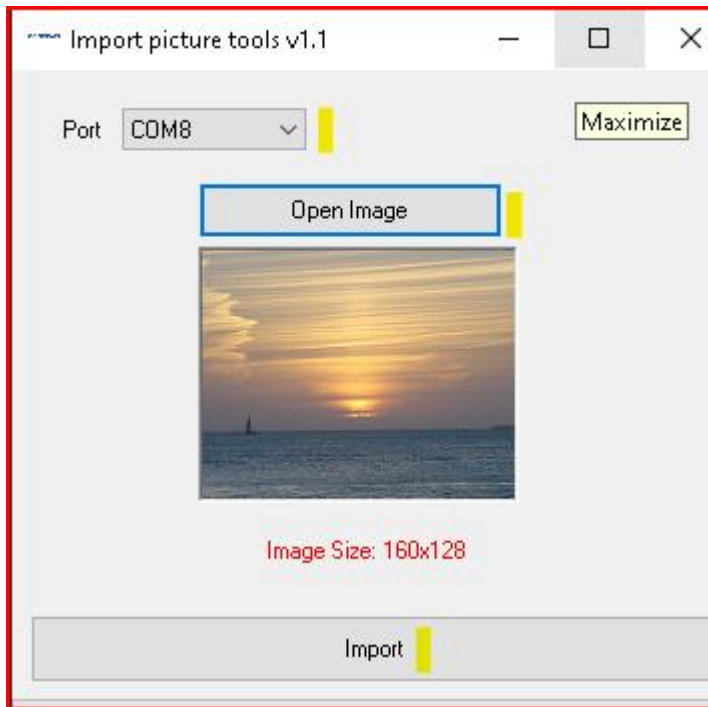
- 1. Open CPS and select Tools



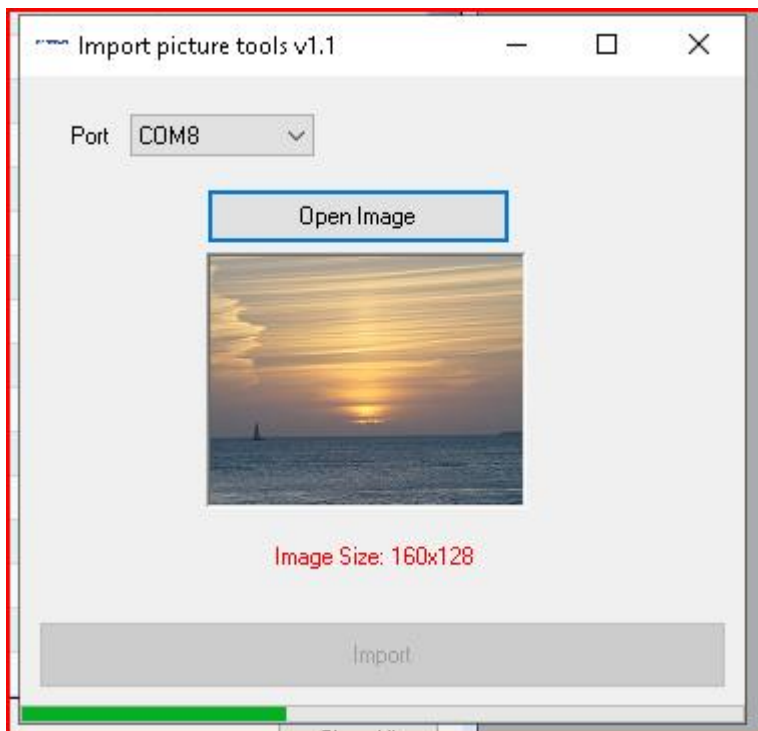
- 2. Select Power On Picture



3. Select Com Port, Open Image, then Import Picture



4. Picture loading to Radio



5. When the import is completed, power the radio Off, then back On