

Open the GM-30 Firmware Update Folder

GM-30 Programming Software	2021/3/8 11:23
GM-30_Firmware Update	2021/3/8 11:23
GM-30 firmware update.docx	2021/3/8 11:23

Open the Radioddity GM-30 v2.06 en

Radioddity GM-30 v2.04 en.exe	2021/4/6 11:29
-------------------------------	----------------

GM-30

File Program View Window Help

Radio Information

Channel

VFO A

VFO B

Channel Edit

General Settings

Phone System

Channel

CH.	RX Freq	TX Freq	Name	Rx QT/DQT	Tx QT/DQT	W/N	Power	PTT-ID	BusyLock	Scan Add	Signal	Freq toppin Code	More
1	462.56250	462.56250	CH.-1	None	None	Wide	High	OFF	No	Yes	1	Off	>>
2	462.58750	462.58750	CH.-2	None	None	Wide	High	OFF	No	Yes	1	Off	>>
3	462.61250	462.61250	CH.-3	None	None	Wide	High	OFF	No	Yes	1	Off	>>
4	462.63750	462.63750	CH.-4	None	None	Wide	High	OFF	No	Yes	1	Off	>>
5	462.66250	462.66250	CH.-5	None	None	Wide	High	OFF	No	Yes	1	Off	>>
6	462.68750	462.68750	CH.-6	None	None	Wide	High	OFF	No	Yes	1	Off	>>
7	462.71250	462.71250	CH.-7	None	None	Wide	High	OFF	No	Yes	1	Off	>>
8	467.56250	467.56250	CH.-8	None	None	Wide	High	OFF	No	Yes	1	Off	>>
9	467.58750	467.58750	CH.-9	None	None	Wide	High	OFF	No	Yes	1	Off	>>
10	467.61250	467.61250	CH.-10	None	None	Wide	High	OFF	No	Yes	1	Off	>>
11	467.63750	467.63750	CH.-11	None	None	Wide	High	OFF	No	Yes	1	Off	>>
12	467.66250	467.66250	CH.-12	None	None	Wide	High	OFF	No	Yes	1	Off	>>
13	467.68750	467.68750	CH.-13	None	None	Wide	High	OFF	No	Yes	1	Off	>>
14	467.71250	467.71250	CH.-14	None	None	Wide	High	OFF	No	Yes	1	Off	>>
15	462.55000	462.55000	CH.-15	None	None	Wide	High	OFF	No	Yes	1	Off	>>
16	462.57500	462.57500	CH.-16	None	None	Wide	High	OFF	No	Yes	1	Off	>>
17	462.60000	462.60000	CH.-17	None	None	Wide	High	OFF	No	Yes	1	Off	>>
18	462.62500	462.62500	CH.-18	None	None	Wide	High	OFF	No	Yes	1	Off	>>
19	462.65000	462.65000	CH.-19	None	None	Wide	High	OFF	No	Yes	1	Off	>>
20	462.67500	462.67500	CH.-20	None	None	Wide	High	OFF	No	Yes	1	Off	>>
21	462.70000	462.70000	CH.-21	None	None	Wide	High	OFF	No	Yes	1	Off	>>
22	462.72500	462.72500	CH.-22	None	None	Wide	High	OFF	No	Yes	1	Off	>>
23	462.55000	467.55000	RPT-1	None	None	Wide	High	OFF	No	Yes	1	Off	>>
24	462.57500	467.57500	RPT-2	None	None	Wide	High	OFF	No	Yes	1	Off	>>
25	462.60000	467.60000	RPT-3	None	None	Wide	High	OFF	No	Yes	1	Off	>>

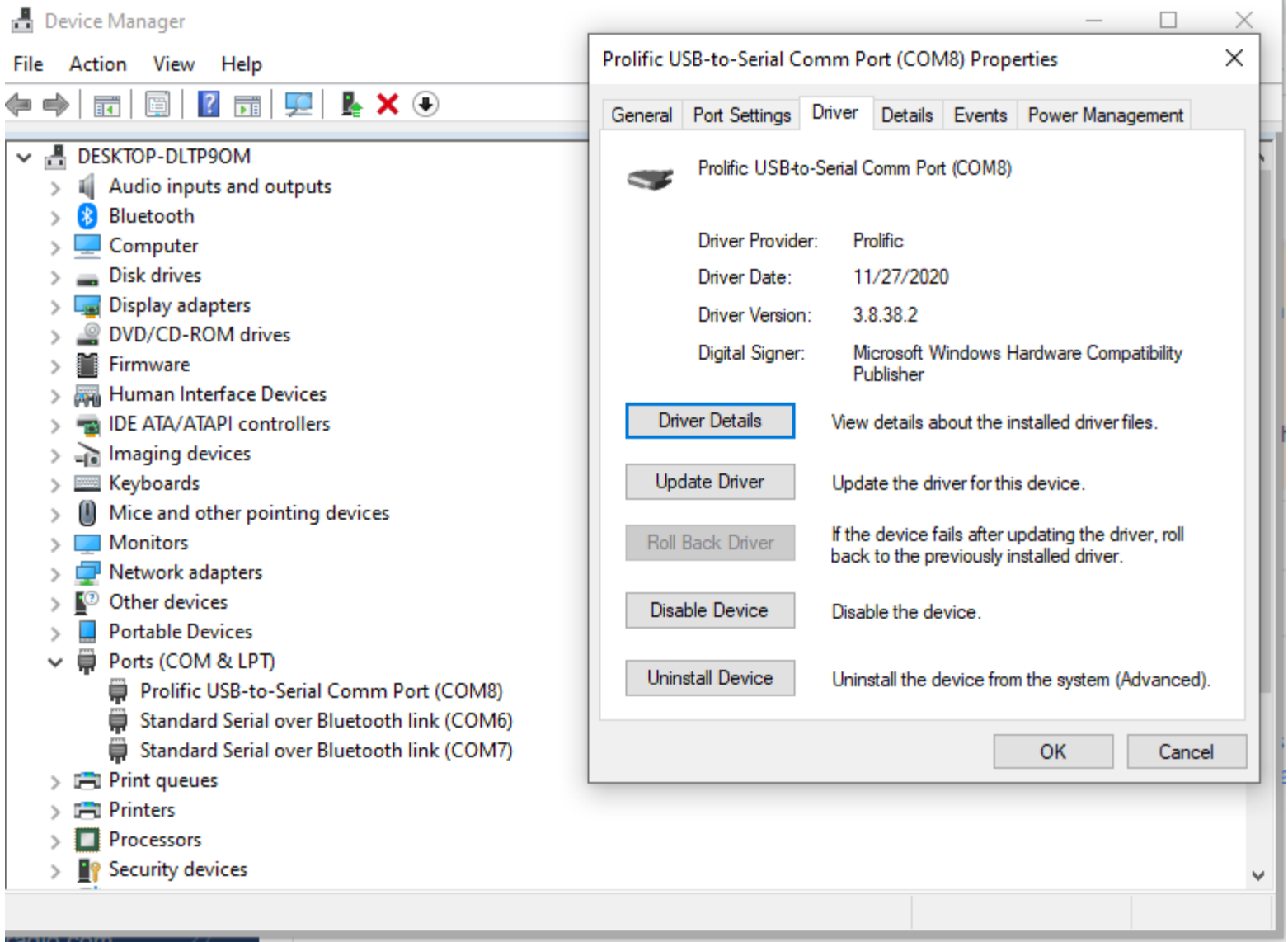
About

Radioddity GM-30 GMRS Radio Program Software

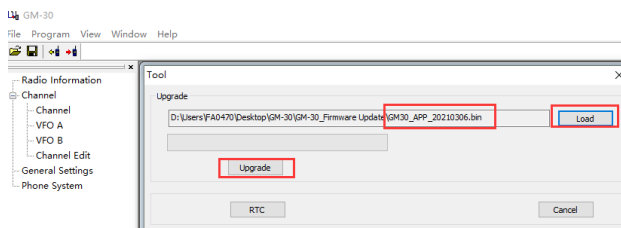
Version 2.06

2021-04-14 10:15:31

Open Device Manager to determine com port number and select it using the highlighted field in the Radioddity GM-30 V2.06 App



1. Plug the programming cable into the computer and radio.
2. Press and hold the PTT + LED key, then turn the radio on.
3. Program >>Communication Port
4. Program >>Tool
5. Select GM30_APP_20210402.bin



6. Click Download in the Downloader app, and wait for 100%.
7. Turn the radio off, remove the programming cable
8. Turn the radio back on and select Menu Option 40 and follow through to Reset the radio.

The Bandwidth corrected