

How to Connect Radioddity GM-30 Pro with the App

Scan to Download the APP



walkie-talkie tool (iOS)



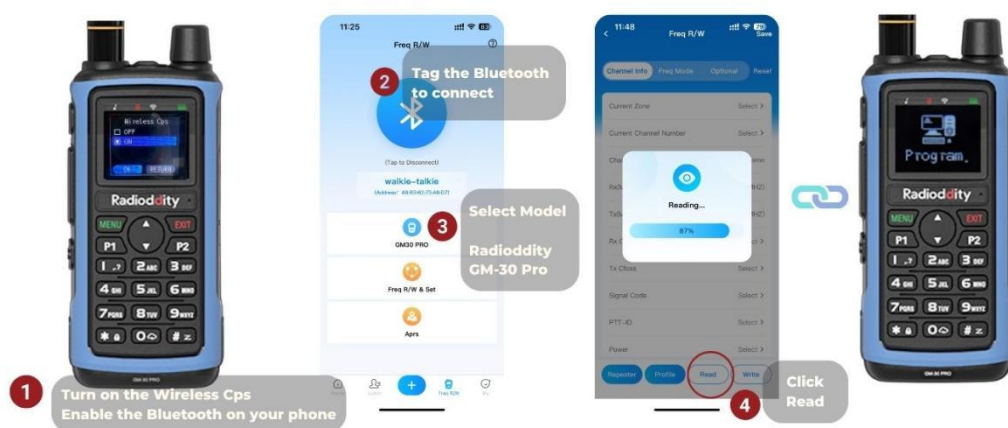
walkie-talkie tool (Android)

1. Install the App and Set It Up

Scan the QR code to download the app — it's available for both iOS and Android devices.

Once installed, open the app (no sign-up required), and allow access to Bluetooth and wireless data.

Location access is optional.



2. Enable Wireless CPS & Bluetooth

On your GM-30 Pro radio, turn on the Wireless CPS setting.

Also, make sure the Bluetooth on your phone is enabled.

3. Connect to the Radio via Bluetooth

In the app, tap the Bluetooth icon, select your walkie-talkie from the device list, and connect.

Once connected, the radio and app are ready for programming.

4. Select Your Radio Model

Go to the app's Freq R/W section. Tap Select Model → choose Radioddity → GM-30 Pro.

5. Read Radio Settings

Tap Freq R/W & Set, then tap Read.

You'll see a Program icon appear on the radio screen, indicating a successful connection.

6. Start Programming

After a few seconds, the app will read your radio's settings.

You can now begin customizing your GM-30 Pro as needed.