

# Unlocking the TYT TH-9800

Thank you for contacting Radioddity Support.

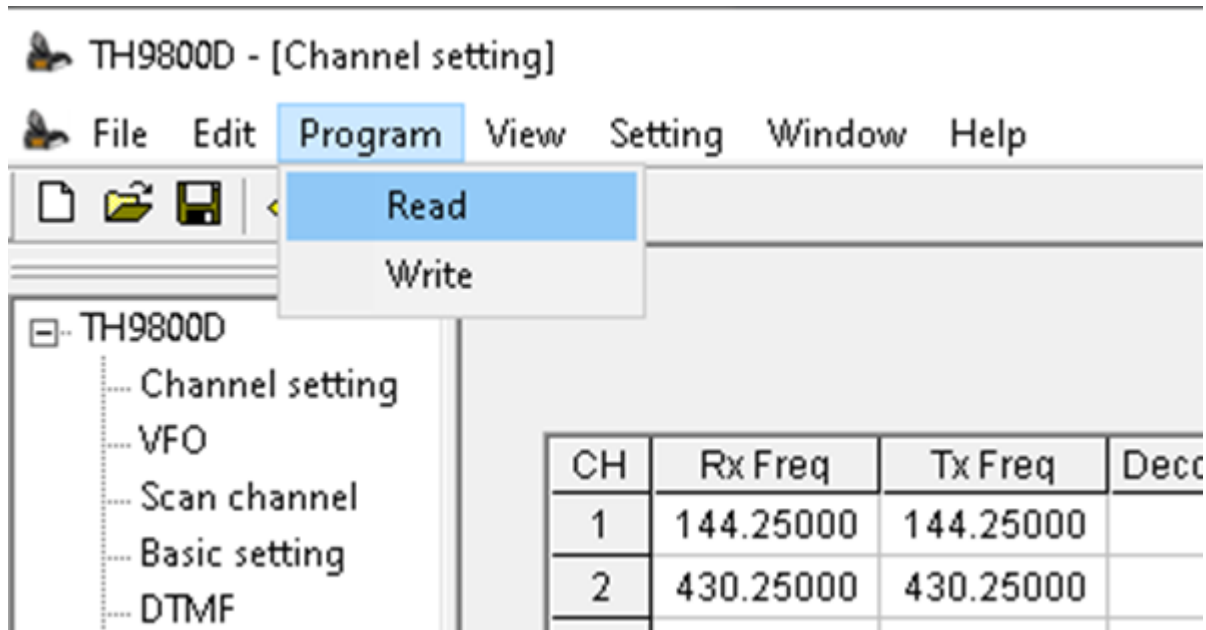
In order to meet the FCC policies, the frequency ranges of the TYT TH-9800 radios we sell are locked in 28-29.7Mhz, 50-54Mhz, 144-148MHz and 420-450MHz. But you can unlock the frequency range if you need.

**Caution: Read your radio first and save the current configuration prior to the unlock procedure. It may be the only way to return the radio back to the stock frequency ranges.**

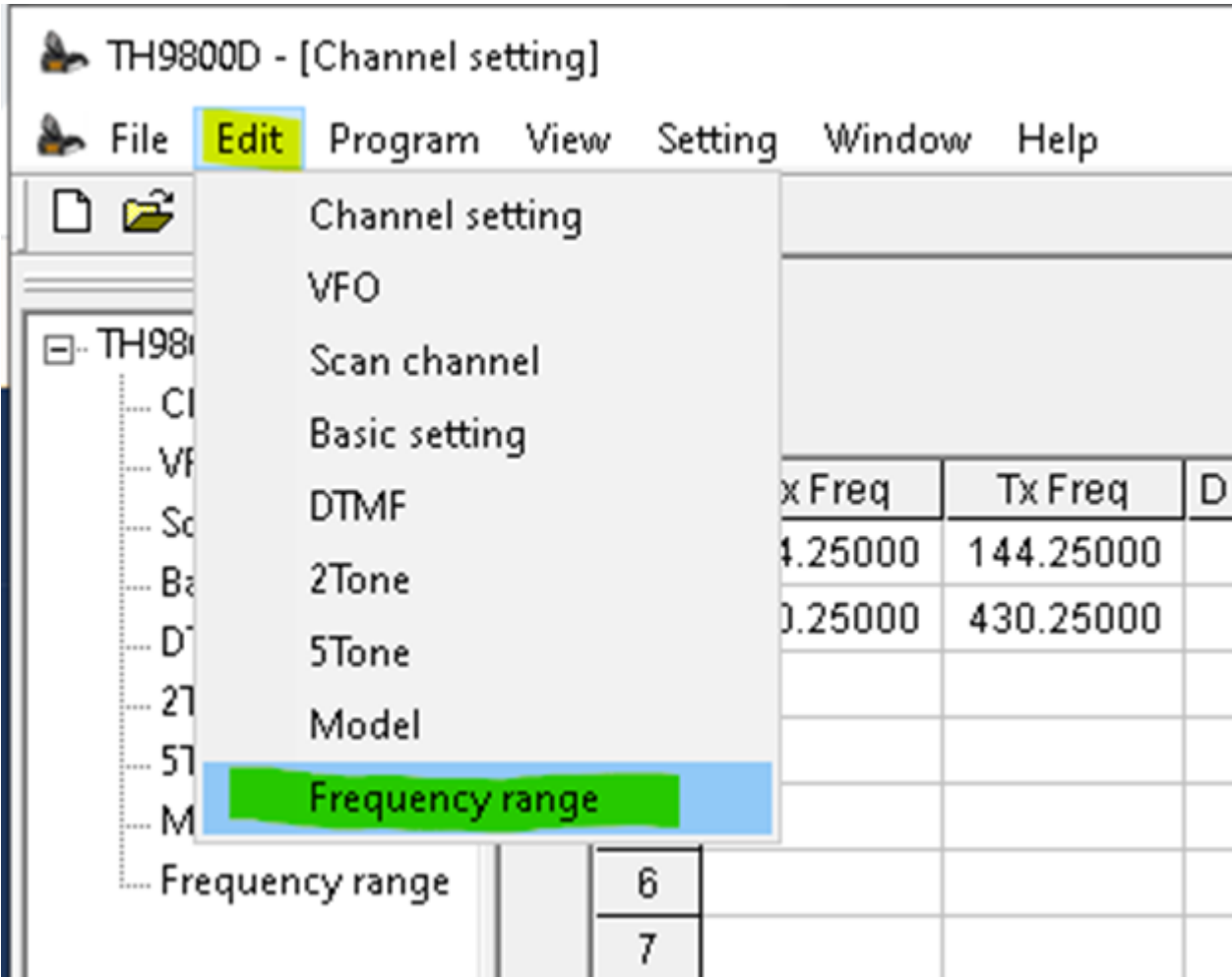
1. Download and Open the programming software

[http://s3.amazonaws.com/s3.image.ro/download/TYT%20TH-9800\\_Programming%20SoftWare.zip](http://s3.amazonaws.com/s3.image.ro/download/TYT%20TH-9800_Programming%20SoftWare.zip)

2. Connect the TH-9800 radio to the computer and load("read") it to the software



3. Select Frequency Range from the Edit Tab.



4. When the Frequency Range window opens. . Press the Ctrl and the F11 key at the same time; then enter the password "9800TYT"

(Note: On some Laptop Computers, the F11 Key may require the Function (FN) key to be used with the Ctrl key. If you have 3 commands available on the upper row of keys, yours may require the key with the same color as the F11 to be used with the CTRL and F11 keys)

5. Then Select the Edit button

TH9800D - [Channel setting]

File Edit Program View Setting Window Help

TH9800D

Channel setting

VFO

Scan channel

Basic setting

DTMF

2Tone

5Tone

Model

Frequency range

CH	Rx Freq	Tx Freq	Decode Type	CTCSS	DCS	DCS Polarity	Power
1	144.25000	144.25000	Off	100.0	023	Positive	High
2	430.25000	430.25000	Off	100.0	023	Positive	High
3							
4							
5							
6							
7							
8							
9							
10							
11							
12							
13							
14							
15							
16							
17							
18							
19							

Frequency range

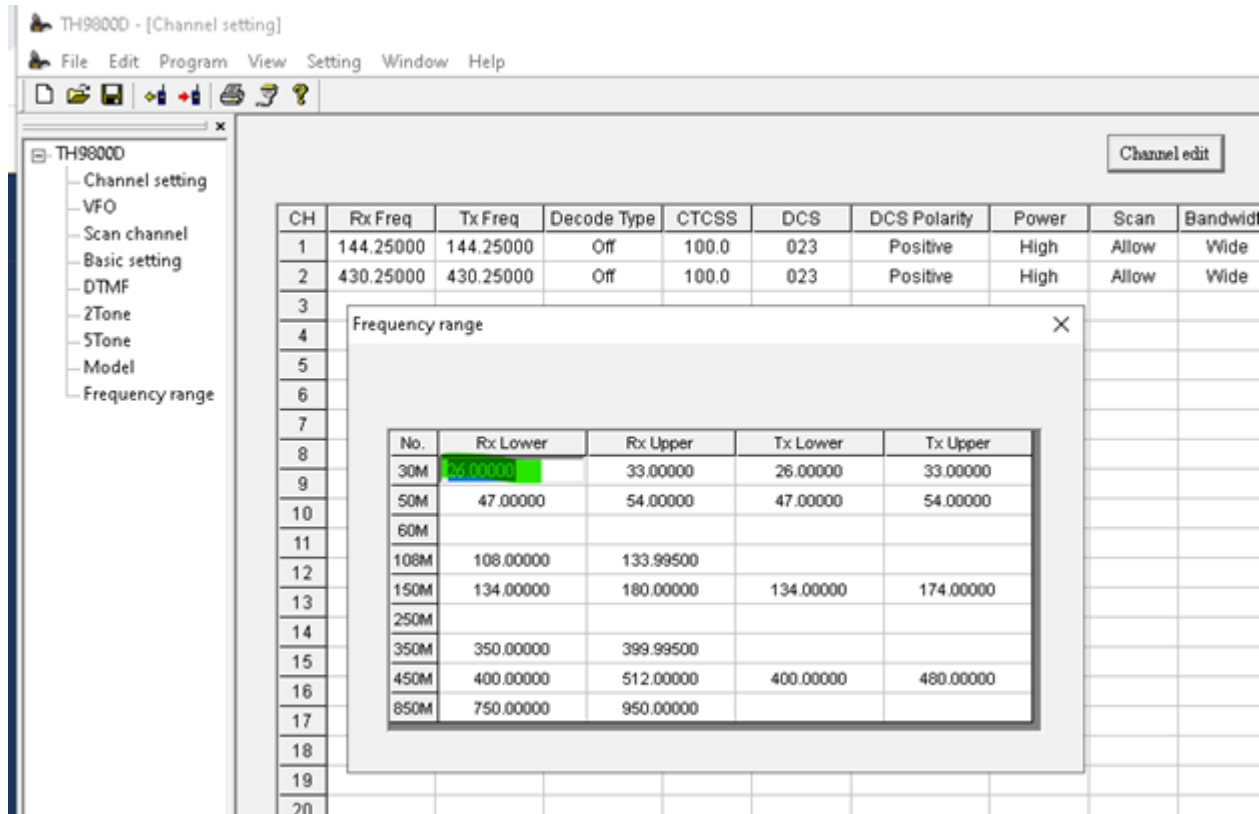
Input password

\*\*\*\*\*

Edit

No.	Rx Lower	Rx Upper	Tx Lower	Tx Upper
30M	26.00000	33.00000	26.00000	33.00000
50M	47.00000	54.00000	47.00000	54.00000
60M				
108M	108.00000	133.99500		
150M	134.00000	180.00000	134.00000	174.00000
250M				
350M	350.00000	399.99500		
450M	400.00000	512.00000	400.00000	480.00000
850M	750.00000	950.00000		

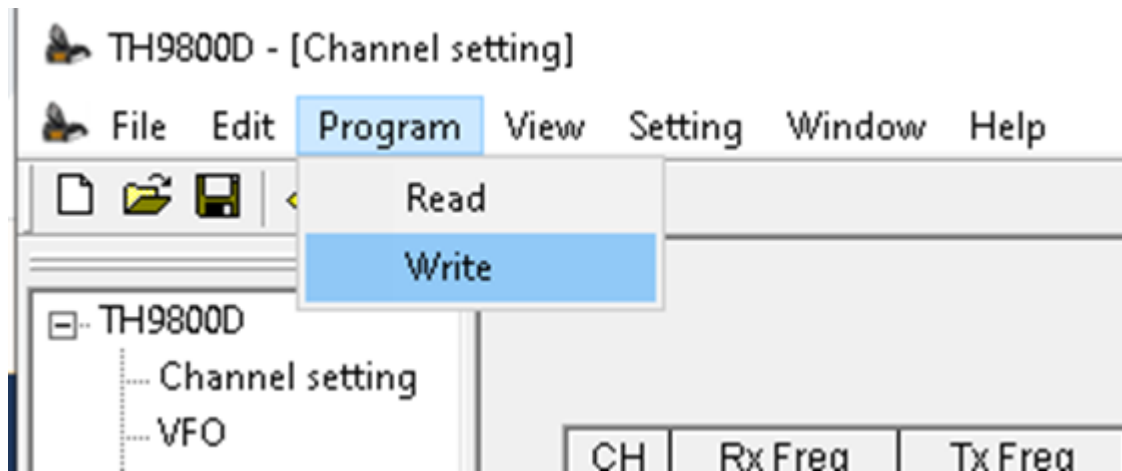
6. Highlight the field you want to change and type in the new frequency.



**Maximum Frequency Range:**

- 26-33MHz (RX/TX) (AM band RX)
- 47-54MHz (RX/TX) (AM band RX)
- 136-174MHz (RX/TX)
- 400-480MHz (RX/TX)

7. When the editing is completed, save the changes and Write them to the radio.



8. Turn off the radio and then turn on it again. Now, it can work in the expected frequency range.

If you need any further assistance or have any questions, please feel free to let me know. Hope you enjoy your new radio!