

# Xiegu G90 Firmware Update

## Instructions

**The following items are needed:**

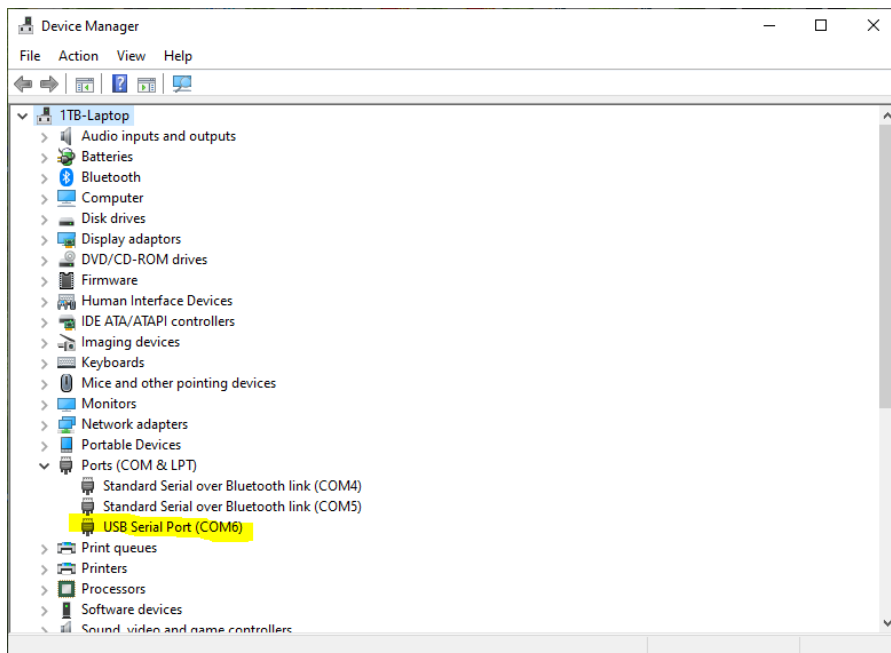
- A. USB-to-Serial cable
- B. G90
- C. A computer running the Windows (XP/Vista/7/8/10/11) operating system
- D. A 12-15V DC power supply (capable of supplying not less than 5A)

### 1. Install USB-to-Serial cable:

The very first thing is to make sure that the USB-to-Serial cable is working properly with the personal computer. The first time the cable is plugged into a USB port on the computer, the operating system will search for a driver file for this new hardware and automatically install the driver program. If all has gone well, we will be able to see the virtual serial port in the device manager program. If the driver file can't be automatically installed by the operating system we will need to install it manually (driver files are available from the [Radioddity G90 support page](#)).

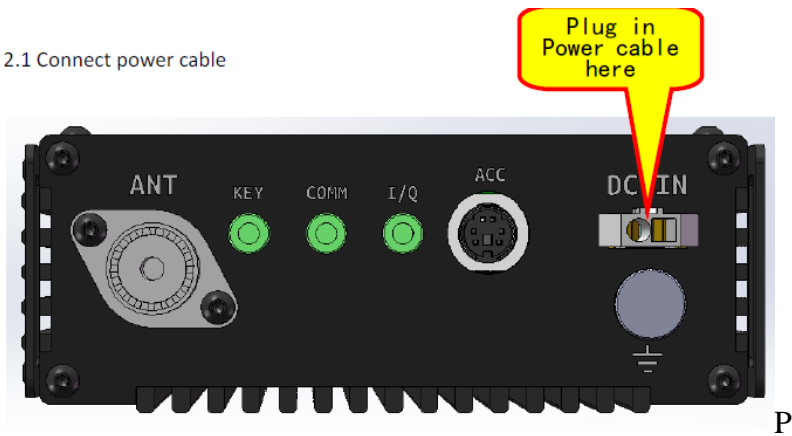
(Note: very early Xiegu USB-to-Serial cables used the Prolific Chip, currently supplied cables use a chip from FTDI, the old cables tended to be black in colour, the newer ones blue).

After this action the virtual serial port and its port number will be visible in Windows Device Manager (which on my computer you will see is COM6).

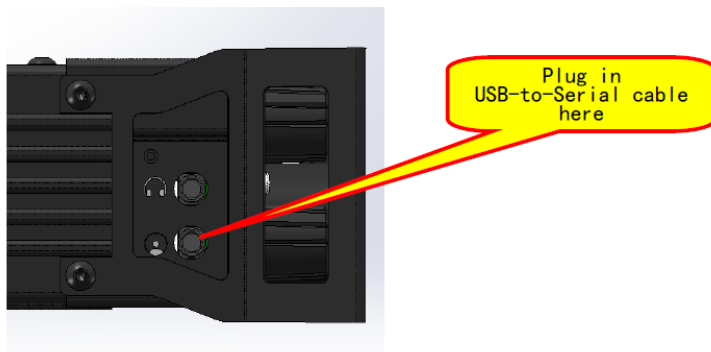


## 2. Wiring everything up:

### 2.1 Connect power cable



### 2.2 For updating the firmware in the head unit:



### 2.3 For updating the firmware in the base unit:



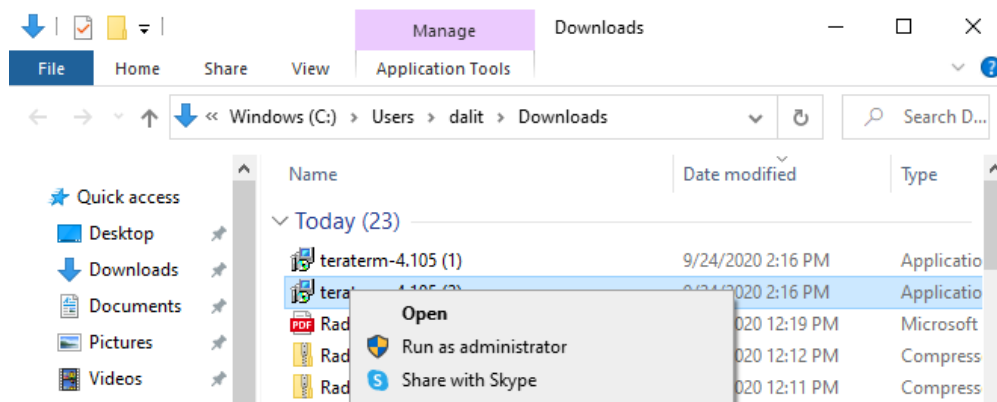
### 3. Update firmware via TeraTerm terminal software

(supplied in firmware zip file from Radioddity):

In order to transfer the firmware to the device, we use a serial terminal software program with XModem support called TeraTerm.

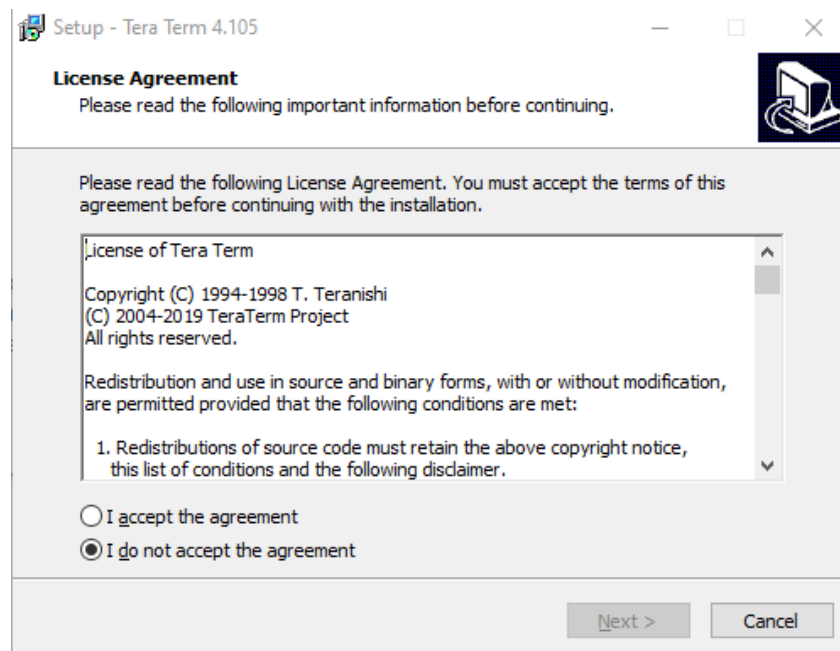
However, we are finding that some of the more aggressive Web Protection/Virus/Malware applications may be stripping the update and firmware files from the downloaded archive, or when the archive is extracted. The following link will allow you to download a certified virus-free Tera Term application used for the G90 update process.

RE: teraterm-4.105 <https://tera-term.en.lo4d.com/windows>

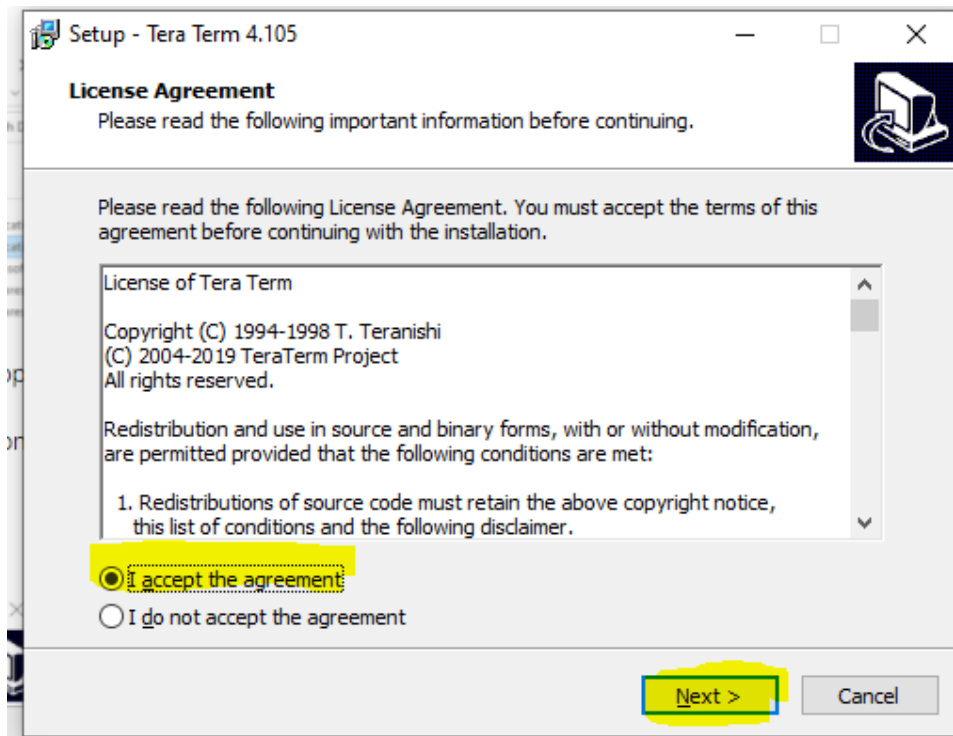


On any executable application, **Right-Clicking** on the app will open a selection box in which **Run as Administrator** is an option. Selecting Run as Administrator will ask for your permission to let the app make changes to your computer - **Click YES**

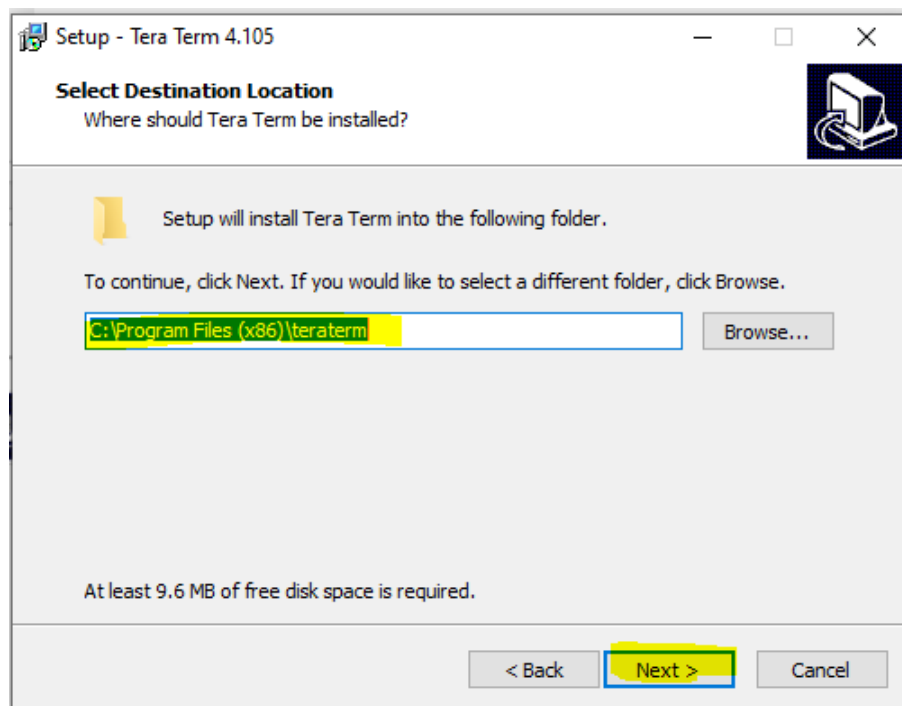
You will next see this:



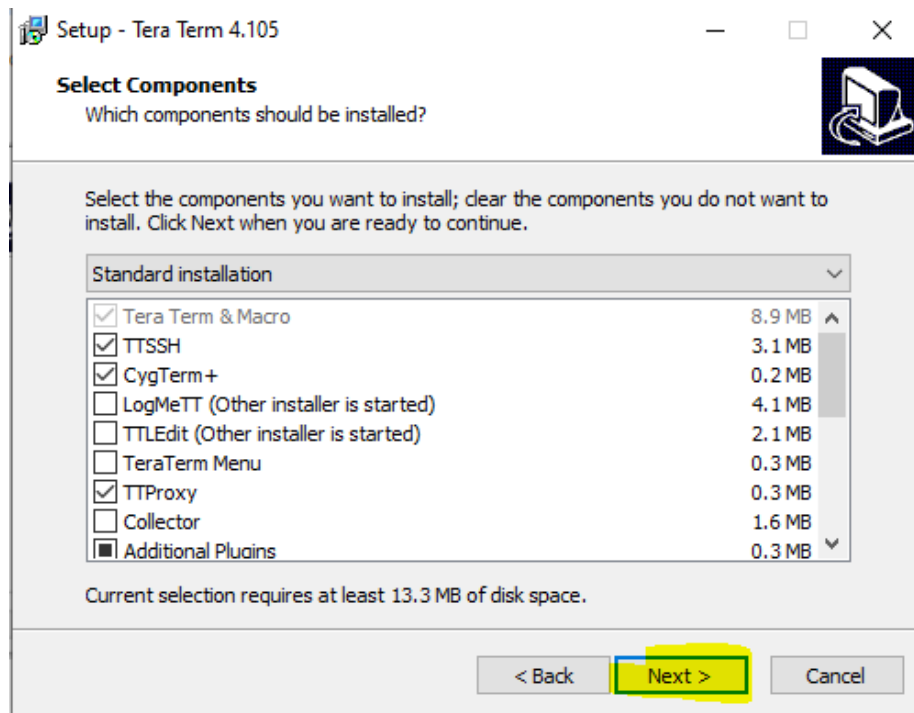
Click on the **I accept the agreement** option and click Next



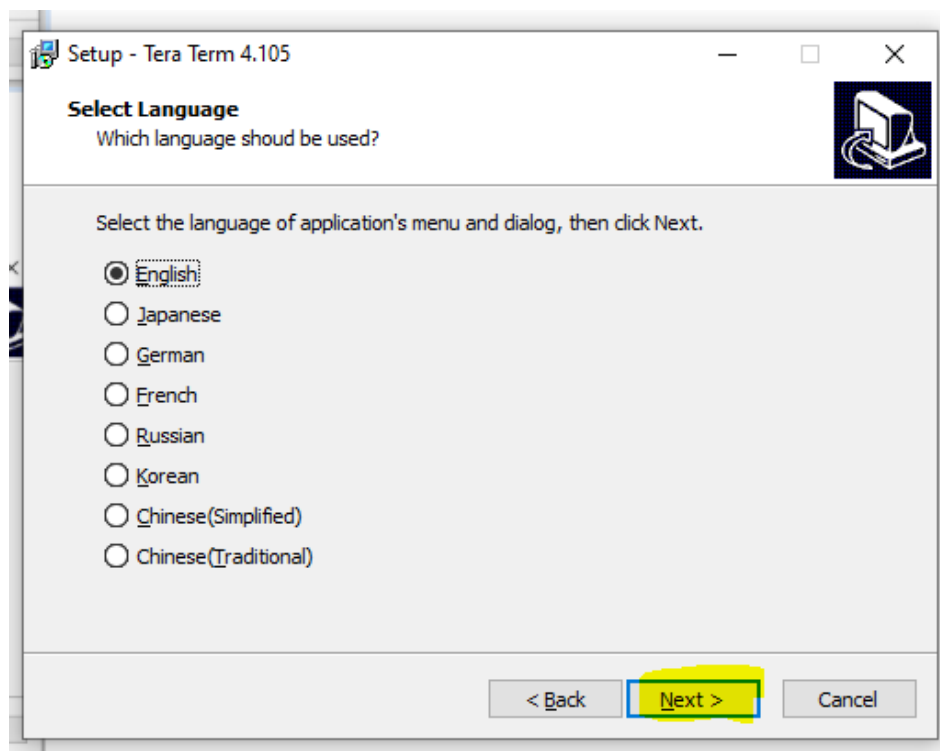
You will be given the option to accept the default installation location or Browse for a new one:



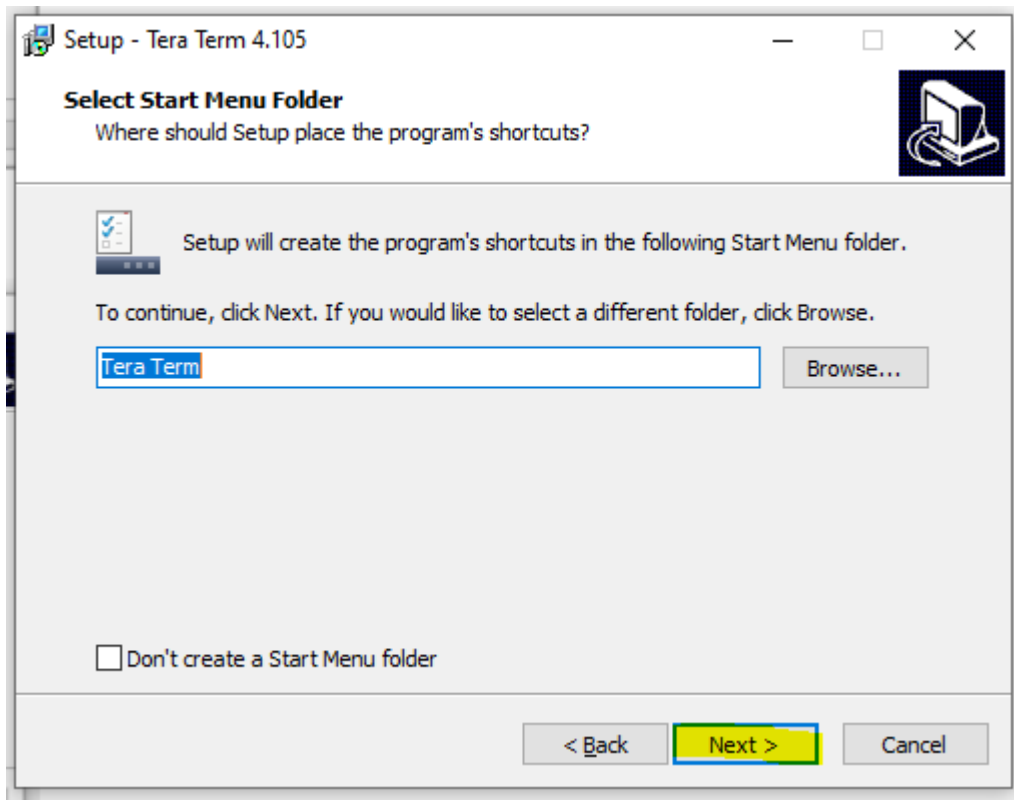
Click Next  
Accept the defaults and click Next



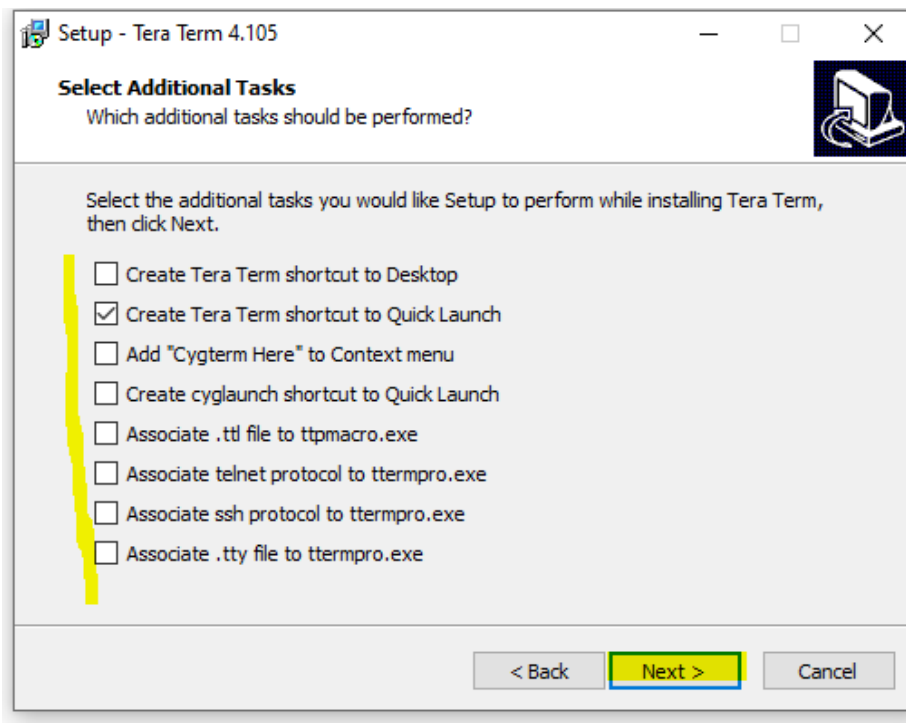
Select Language and click Next



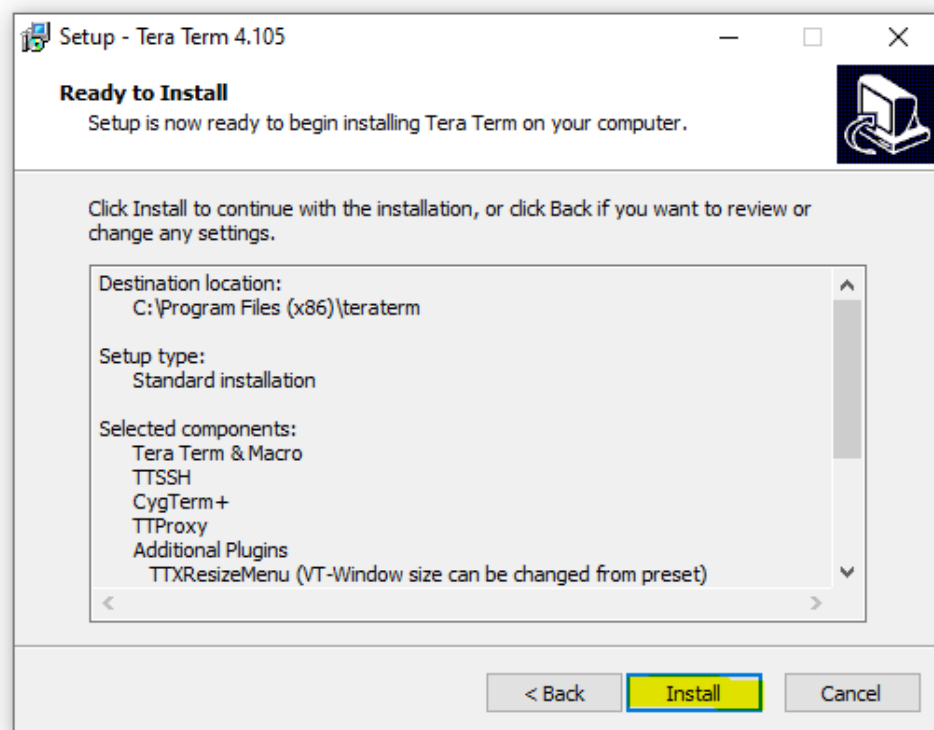
Select default or Browse for Start Menu Folder and click Next



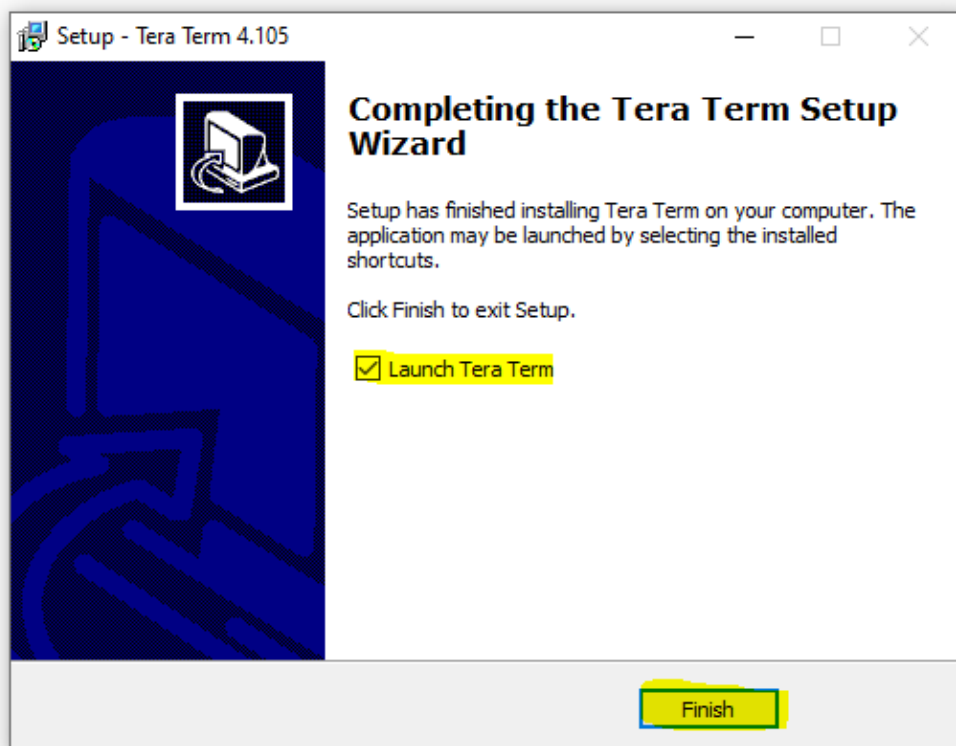
Select additional tasks/options and click Next



Confirm installation options and click **Install**



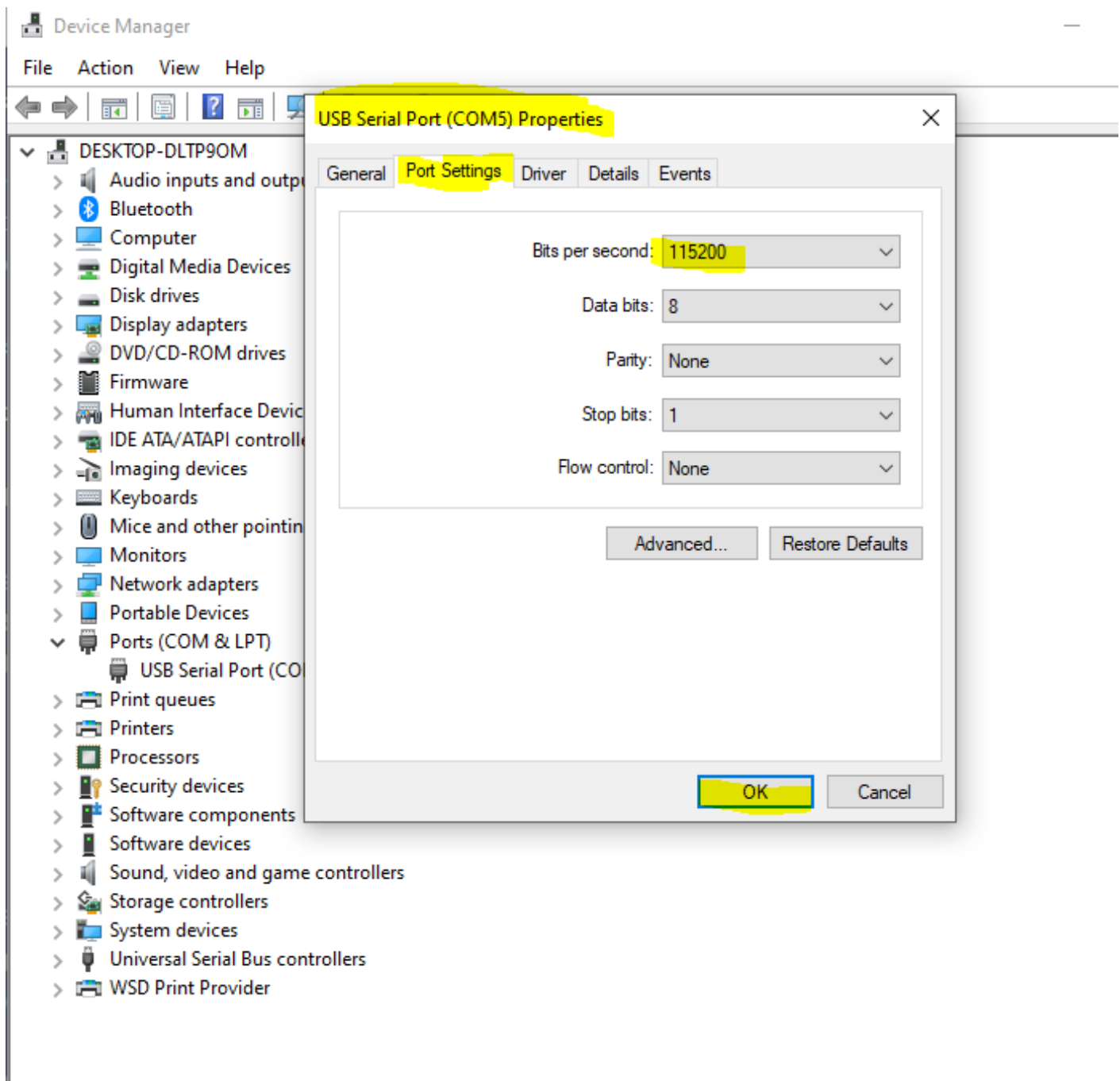
Select Launch Tera Term and click Finish



Open **Device Manager**, Click on **Ports (COM & LPT)**

Observe Port number -- **Right-click** on the **USB Serial Port (COMx)** --x is the Com Port Number.

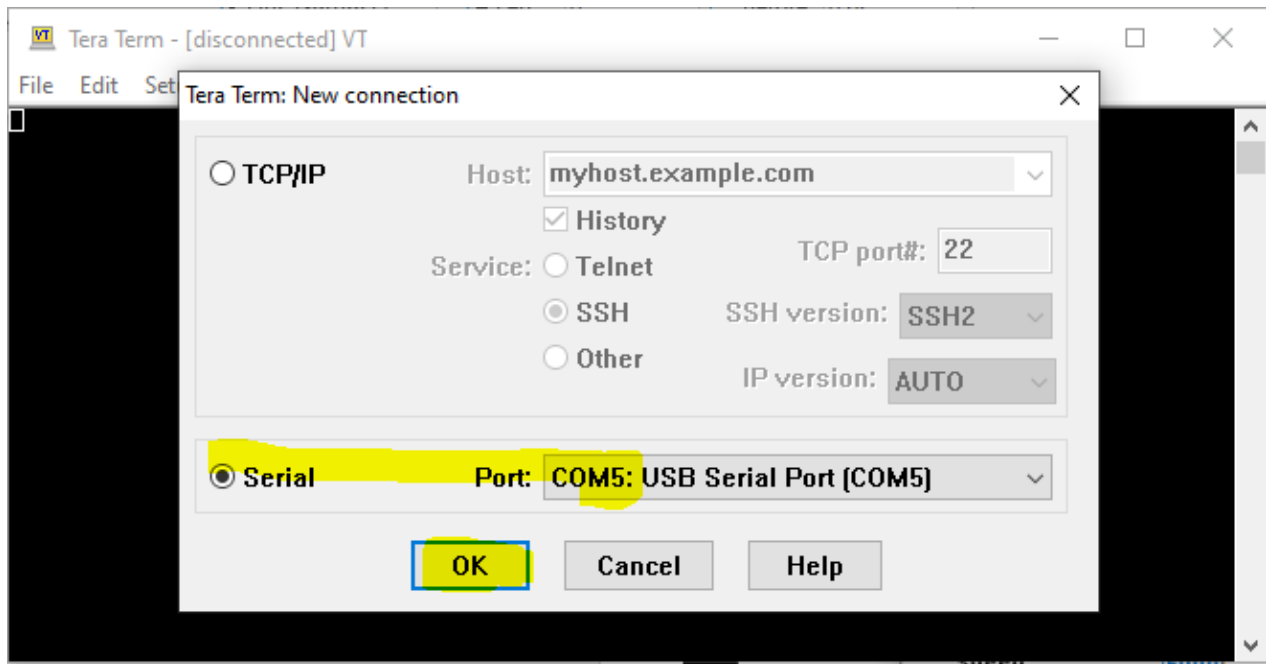
Select **Properties**, then **Port Settings**. Confirm Bits per seconds is **115200**. Click **OK**





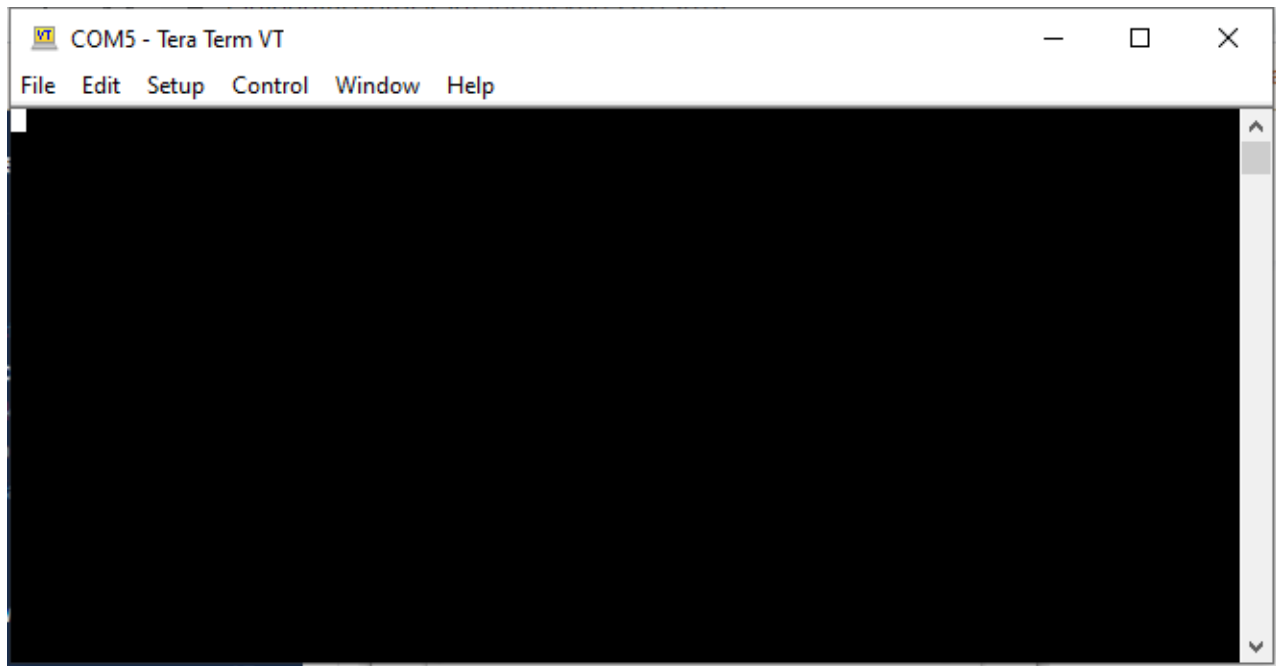
In the Window for Tera Term New Connection, click on the **Serial** selection and confirm it matches the port number in Device Manager.

Click OK in the Tera Term New Connection Window.

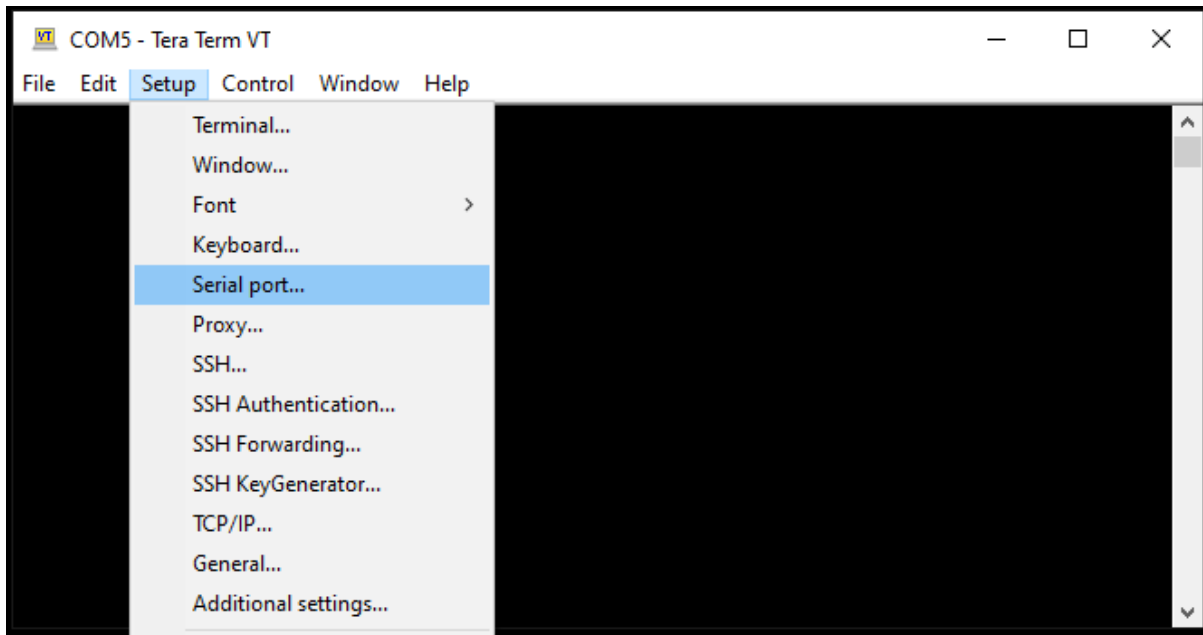


The Tera Term Window opens.

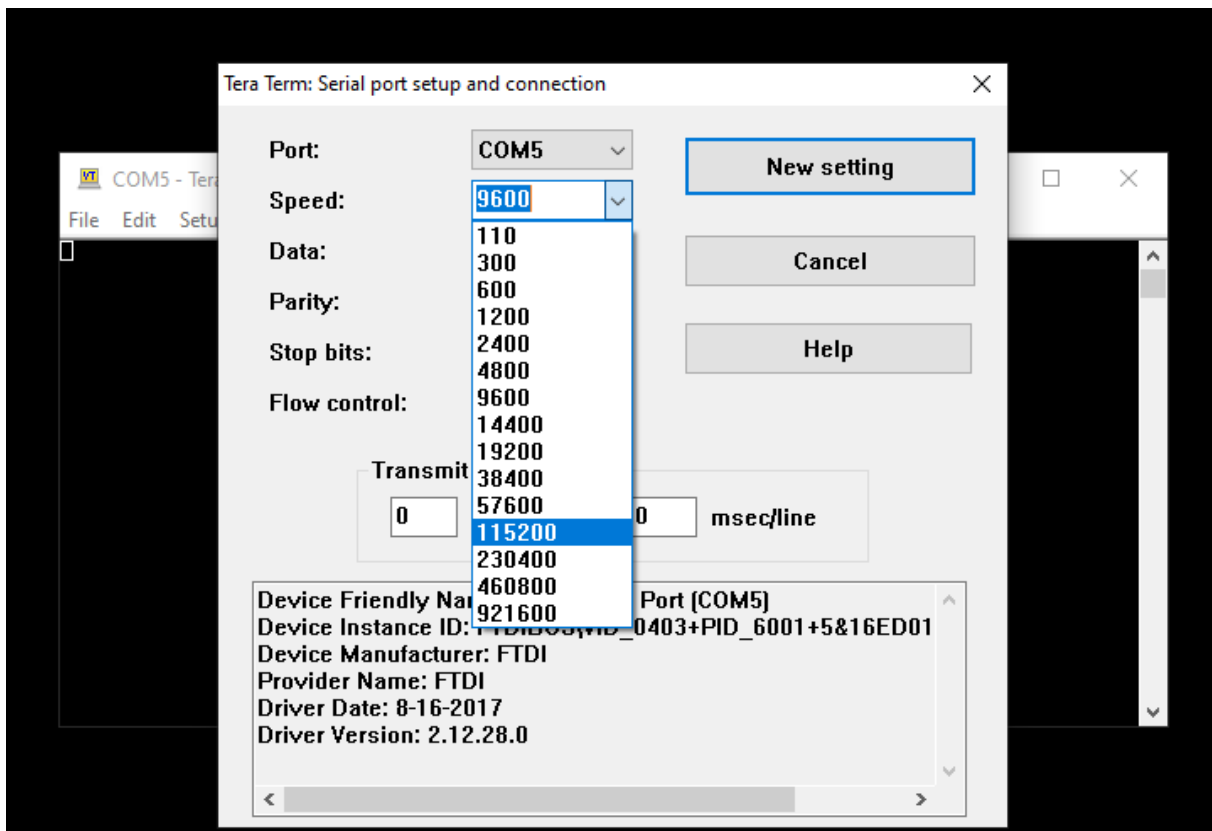
Plug the Data Cable into the **rear connector** on the G90 labeled **COM**.



Click on the **Setup** tab at the top of the Tera Term Window and select **Serial Port**

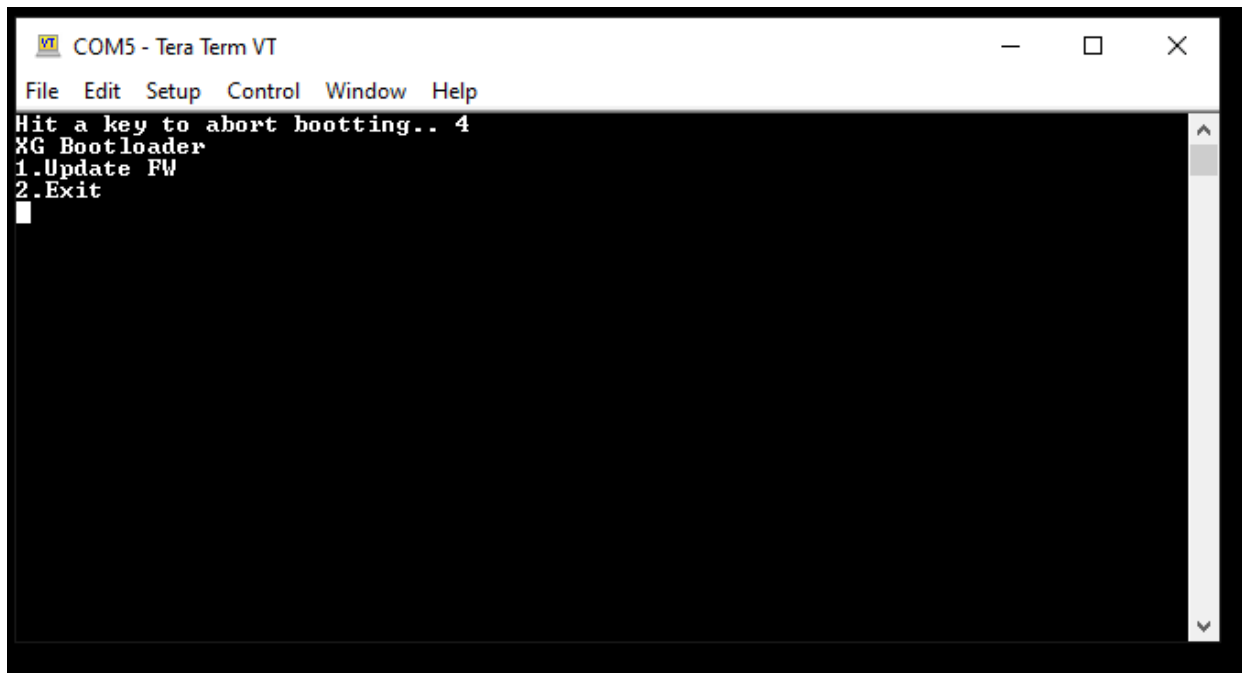


Confirm the Speed is **115200** Click **New Setting**



With G90 connected to a 13.8 Volt DC Power source capable of at least 6 amps current capacity...

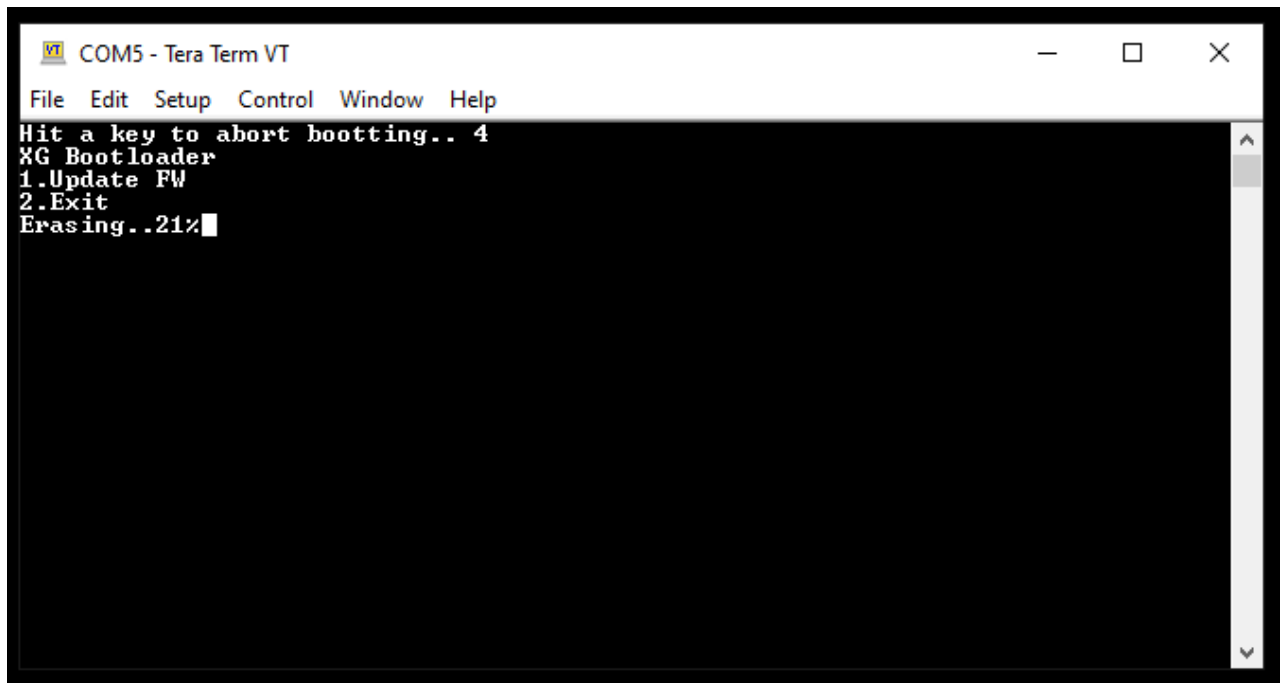
**HOLD SPACEBAR DOWN** and push the **G90 Power button**



```
COM5 - Tera Term VT
File Edit Setup Control Window Help
Hit a key to abort bootting.. 4
XG Bootloader
1.Update FW
2.Exit
█
```

Choose **1. Update FW**

Erasing message and percent shown

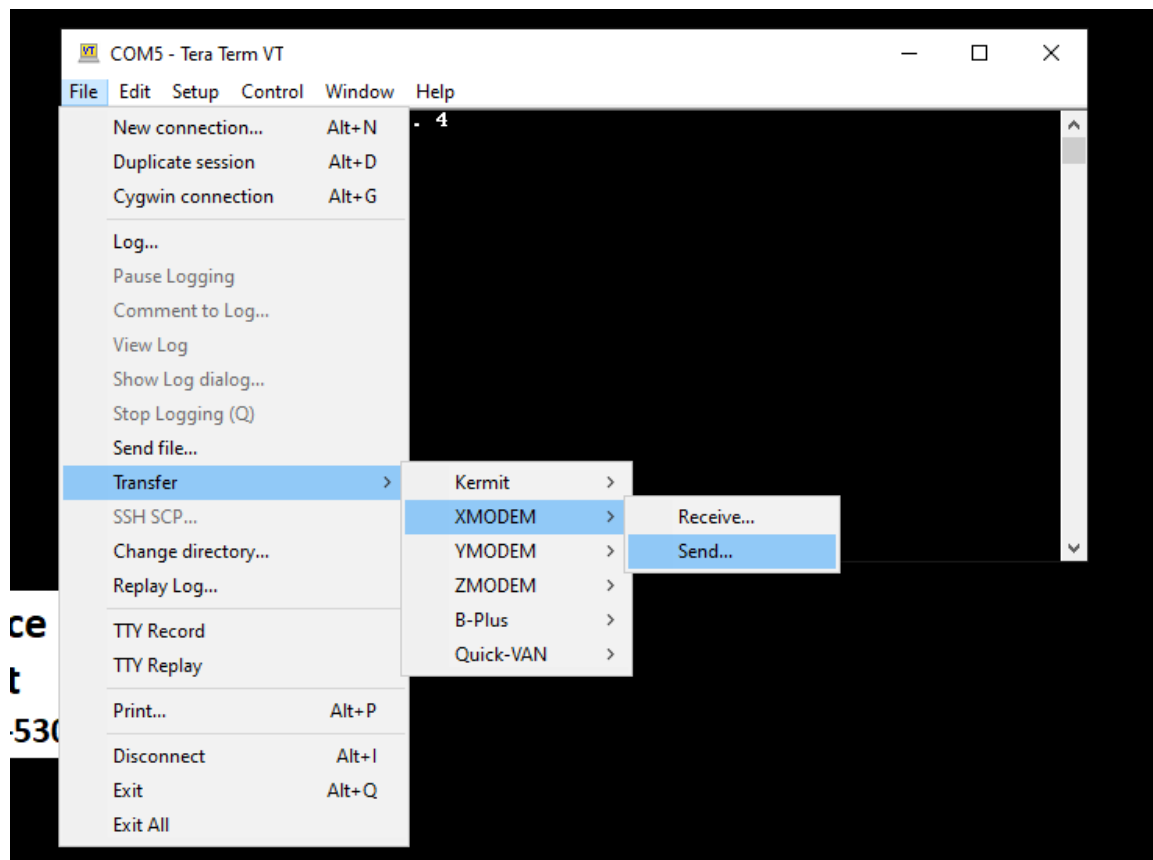


```
COM5 - Tera Term VT
File Edit Setup Control Window Help
Hit a key to abort bootting.. 4
XG Bootloader
1.Update FW
2.Exit
Erasing..21%█
```

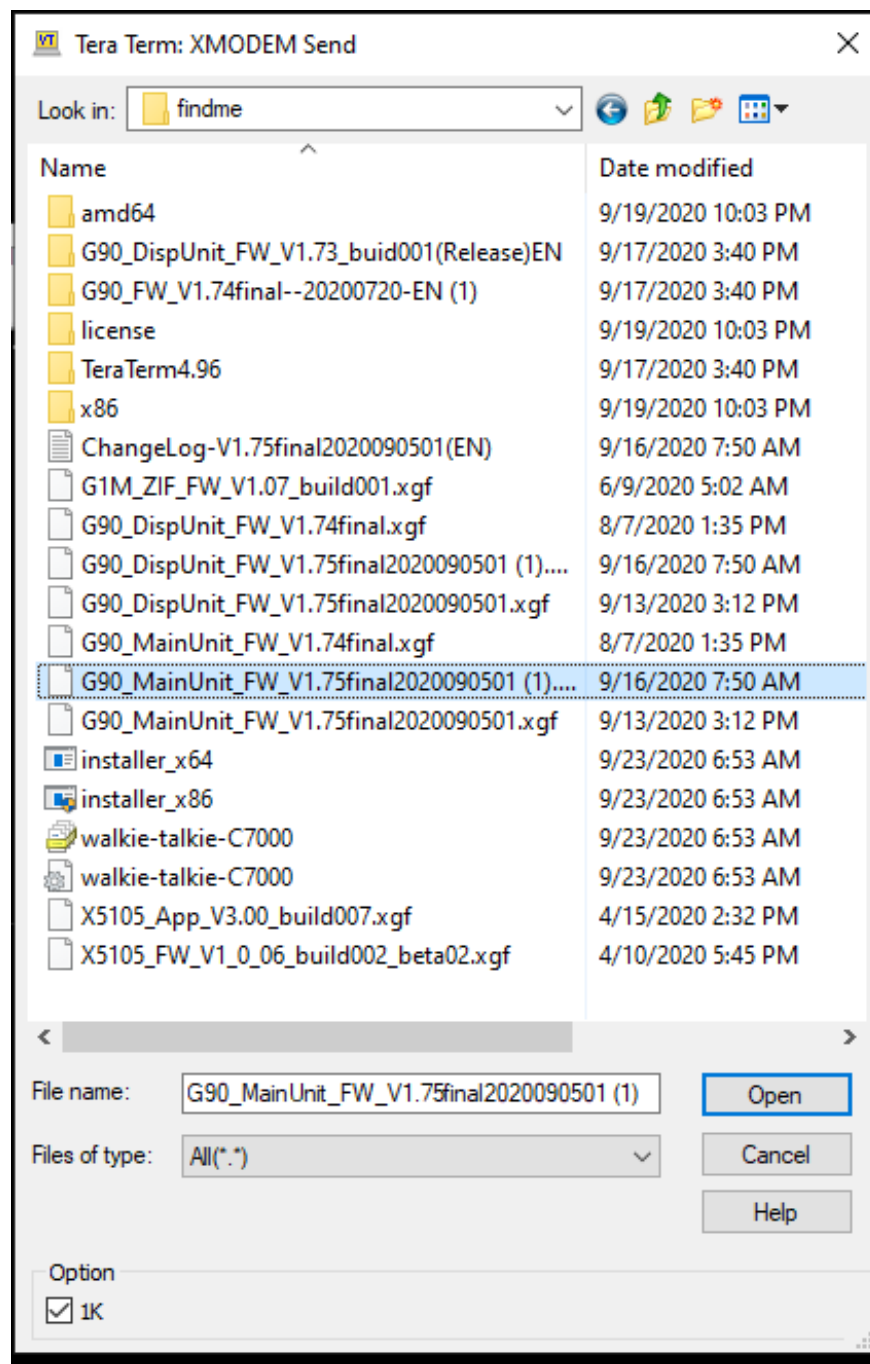
When the old firmware is erased and the message displayed is **Wait FW File...**



In Tera Term Click **File** → **Transfer** → **XMODEM** → **Send** In that order



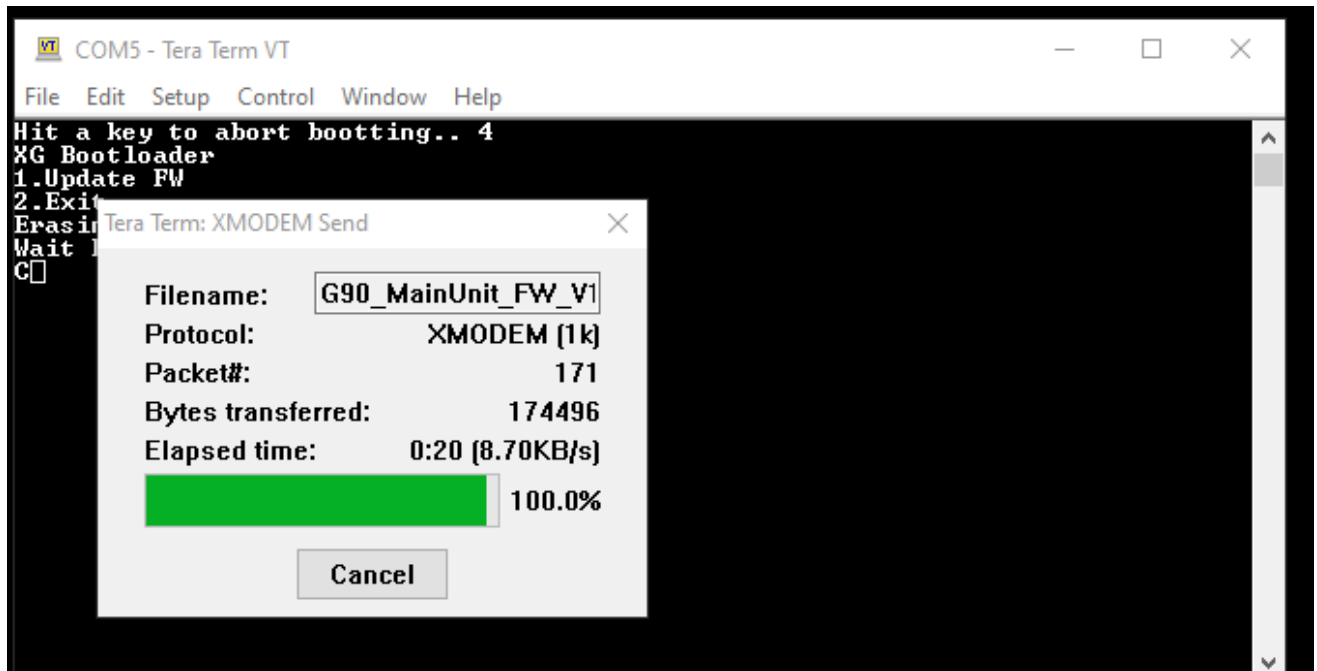
Select **Main Unit** firmware update file (download the [latest firmware of Xiegu G90](#))



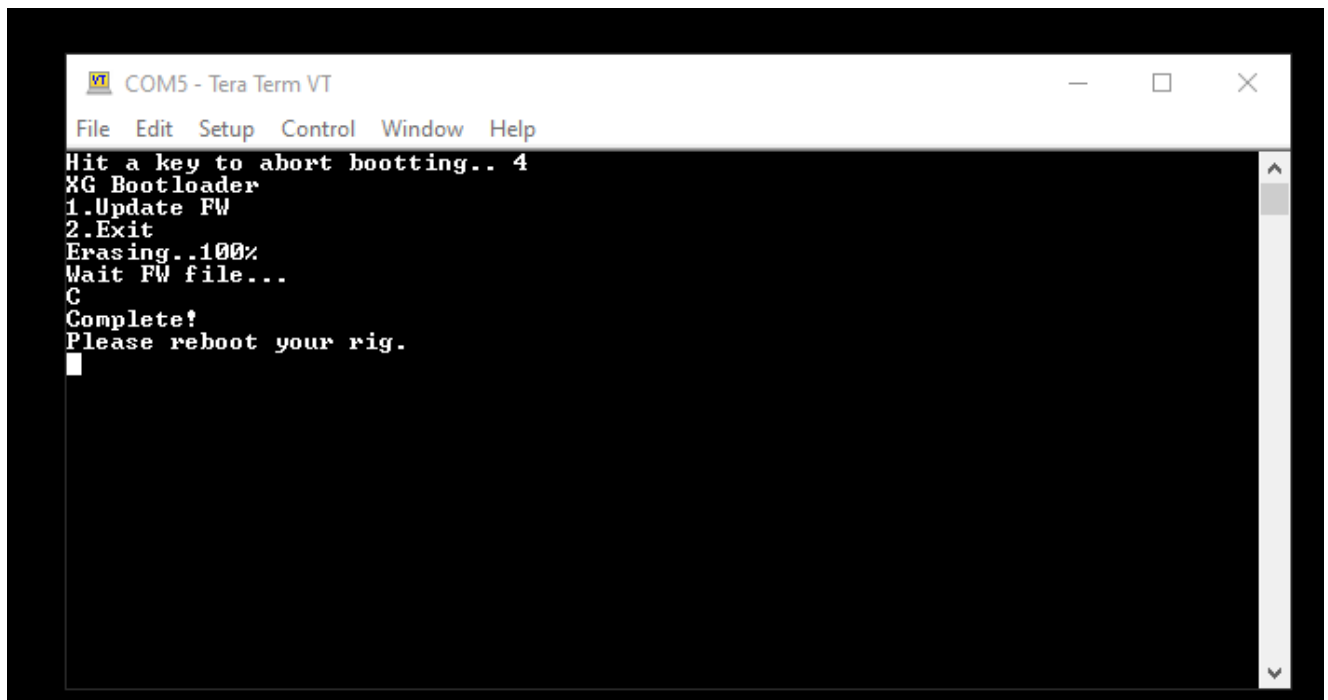
**Check the 1K Option Box The transfer will not work if you do not do this!**

Click Open

Loading



Complete



Remove power count to 5 and reconnect power

**Remove the plug from the rear and insert in the lower left-hand socket on the Display Head**

**Press Volume Knob in and power-on the Display Unit**

(for G90 radios with Serial Numbers containing the letter V as the prefix (ONLY those containing a V as the first character of the Serial Number))

**OR**

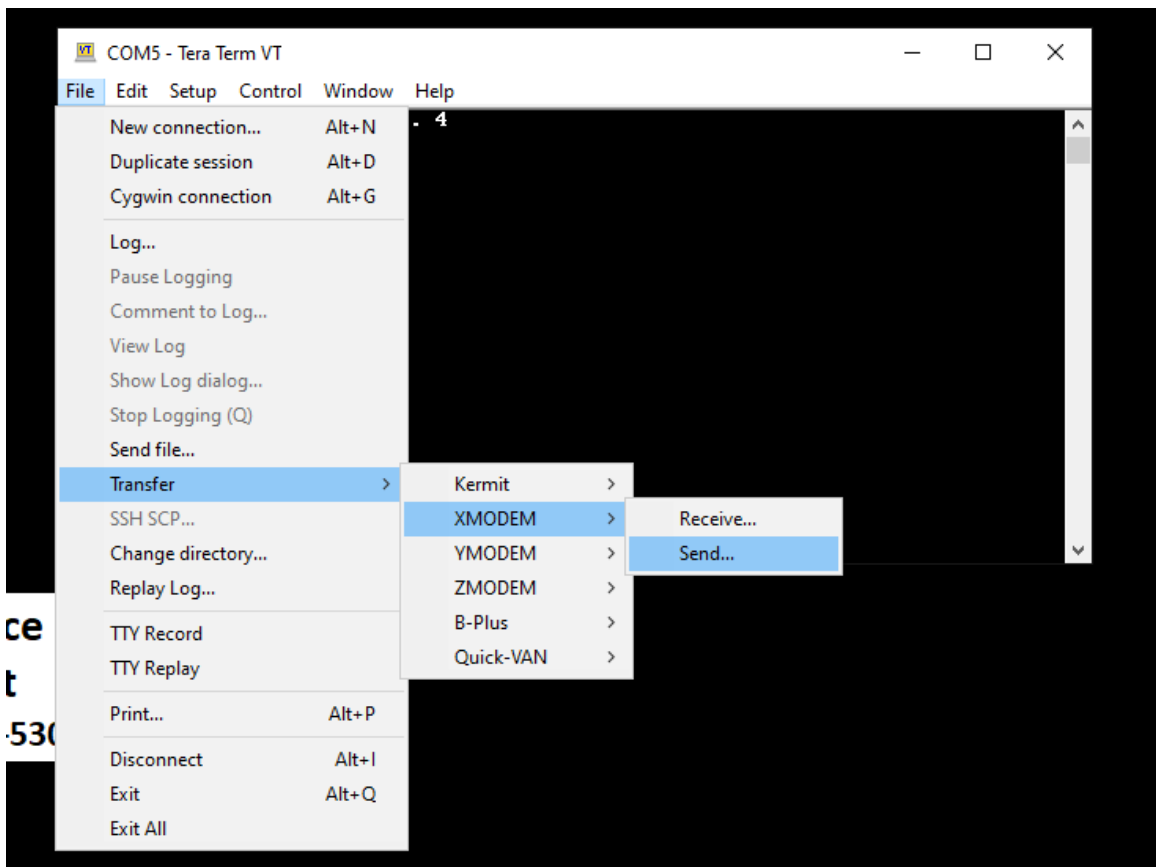
**HOLD SPACEBAR DOWN and press G90 Power Button**

(for G90 radios with Serial Numbers not containing the letter V as the prefix)

Select **1 Update FW**

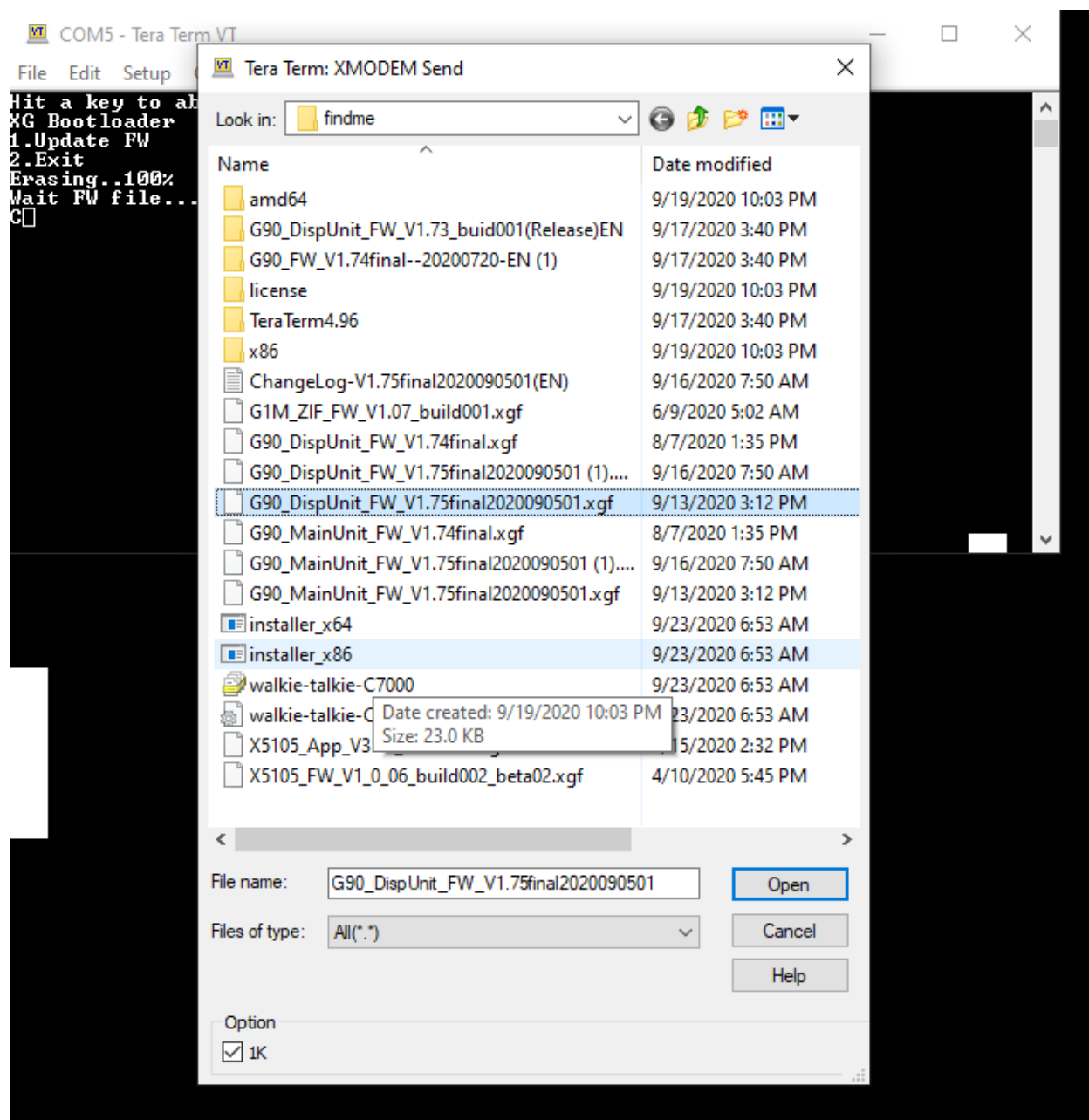
When the TeraTerm displays **Wait FW File**

In this order, select **File** → **Transfer** → **XMODEM** → **Send** In that order



Select **Display** Firmware file

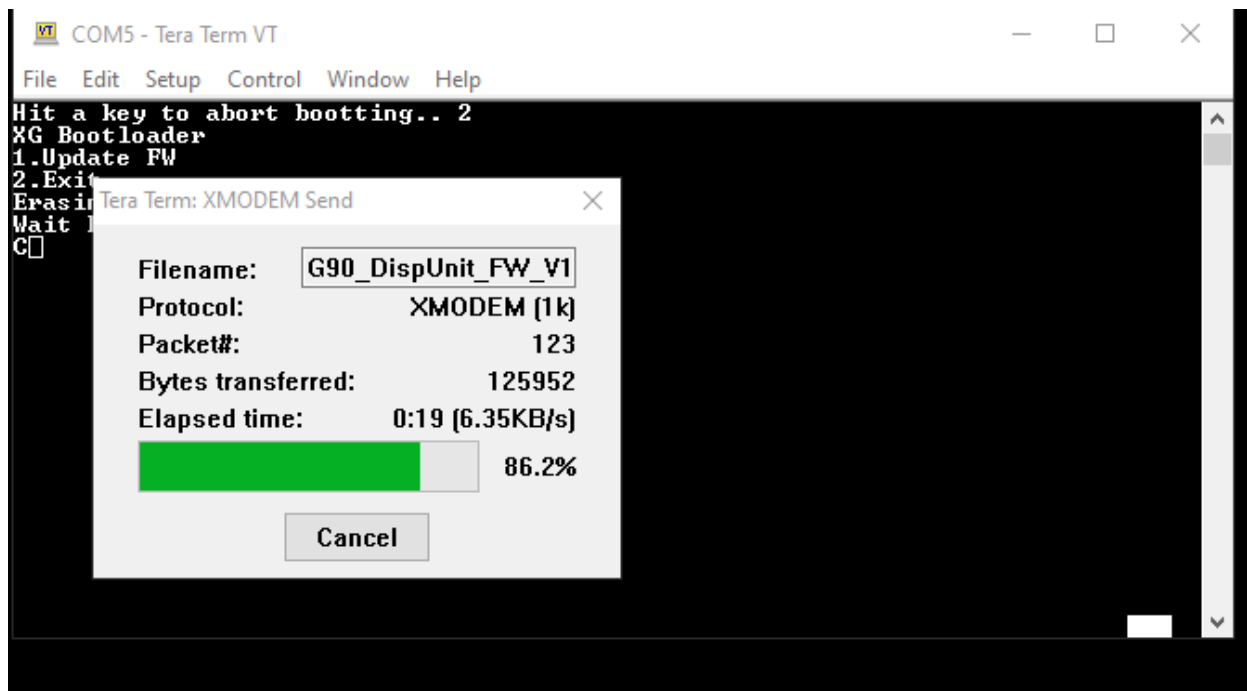
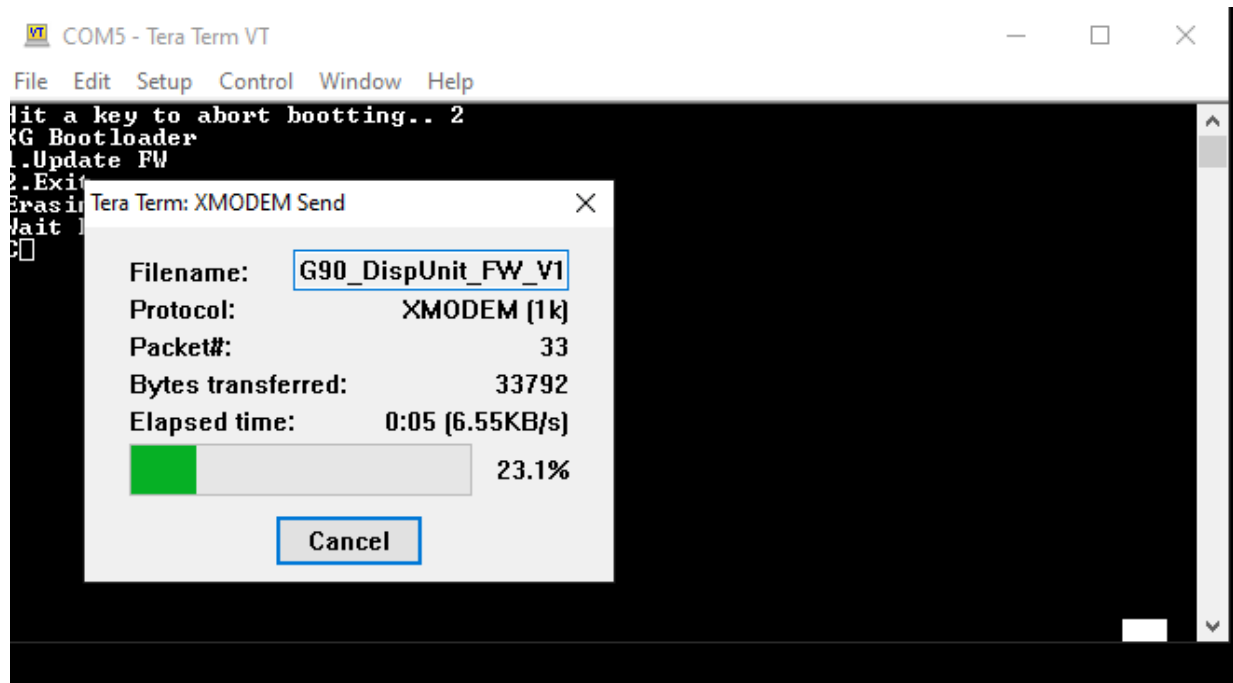
Place a Check mark in the 1K Box





Click Open

Loading.....



**IGNORE THE LOST COMM** Message if it appears

On Completion, **remove power from the G90 and count to 5**

Re-Connect power to the G90. Turn radio on.

Congratulations! Enjoy the new firmware.

--End-of-instructions—

© Radioddity 2022